

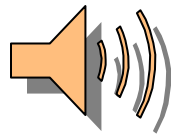


# The Branch News

Winter 2012

Spring Branch Middle School PTA  
Quarterly Newsletter

Spring Branch Middle School  
21053 Hwy 46 W  
Spring Branch, TX 78070  
(830) 885-8800



## Principally Speaking...

Dear Wrangler Community,

### Inside this issue:

SBMS PTA President	2
Volunteers Needed!	2
8th Grade Science	2
Yearbooks!	3
GT News	3
Math Department	3
The Science Dept- Wants Your Boxtops!	4
STAR Bowlers	4
Theater Arts	4
Library News	5
The Wrangler Scholar Center	5
Like Us on Facebook!	5
G-Force is Back!	6
Plug In To SBMS!	6
2011-2012 Reflection Winners	7
Join SBMS PTA!	8

Happy New Year from SBMS! I hope 2012 has gotten off to a great start for you and your family. As we finish the fall semester and head into spring, I am looking forward to all the wonderful events and activities that are scheduled to take place at SBMS. UIL academics, spring sports, the spring dance, choir and band concerts are just a few events that will be filling our spring calendars. A great place for you to find out what is going on at SBMS is our website's events calendar:

<https://sps.comalisd.org/news/Calendars/Lists/SBMS/calendar.aspx>

Spring also means testing time in Texas. As we start the second semester, our focus turns to testing. As most of you are well aware, our students will be taking the new STAAR exam which has replaced TAKS. We are learning more and more about what to expect from this new assessment daily. Rigor, depth and complexity seem to be the key words that are being used to describe the difference between the two assessments. Our teachers are focused and work each and every day to provide our students with the support and guidance they will need to be successful. If you want to learn more about the new STAAR exams, please feel free to visit the TEA website at:

<http://www.tea.state.tx.us/student.assessment/staar/>

I look forward to working with the students and parents this spring and hopefully we will see you at some of the wonderful events planned at Spring Branch Middle School, home of the

**WRANGLERS.**

Thanks and have a great Wrangler Day!

Chris J. Smith

Principal

Spring Branch Middle School



Spring Branch Middle School... **BOLD** and True!

## From the SBMS PTA President...

Dear Wrangler Family,

We are now halfway through the school year but things have certainly not slowed down. I would like to personally thank all the parents, teachers and community members that support our SBMS Parent Teacher Association. I have been a member of several PTA's for the past 11 years and the one way I know that helps with supporting the school is through membership in your school's PTA. The cost is only \$7.50 per person which supports the many things we do for our school and students throughout the year. Today there are more parents working out of the home than there has been in ten years. Becoming a member is a quick and easy way to support what we do without actually having to worry about your time. It also gives you a voice in deciding what we do for SBMS. We have 4 Membership Meetings a year & we welcome input and ideas. Another way to support the Parent Teacher Association is by volunteering in our concession stands during sporting events here at our school. These fundraising events allow the PTA to host two school dances a year for all students, purchase items for the school that are not provided by the district, and pay for an academic celebration for all 6th & 7th grade students, host an off campus 8th grade end of the year party, as well as having staff appreciation events and bringing in programs for the students. Without the support from our parents, teachers and community members we would not be able to have these events for our children. These events take a lot of preparation, organizing and volunteer hours, as well as funds. Please consider becoming a member of the SBMS Parent Teacher Association. It is never too late to join and make a difference at Spring Branch Middle School.



Thank you,

Maria Klaus, SBMS PTA President

## Volunteers Needed for The Basketball Concession Stand!

Please consider helping in the concession stand. Everyone loves the goodies sold and this is only possible when we have volunteers!

Here are the dates/games where volunteers are still needed:

February 2 — 7th boy's basketball  
 February 9 — 7th boy's basketball  
 February 16 — 7th boy's basketball  
 February 27 — 7th boy's basketball

Please contact Christina Zeug at [bennkirsten@yahoo.com](mailto:bennkirsten@yahoo.com) if you are able to volunteer.



## From the 8th Grade Science Department...



Science Supplies: 8th Science Classes will be starting a new 2nd Semester Journal - so be sure your child has a new composition book ready to go on January 17! They will also need to have their own colored map pencils and all the necessary supplies - so have them check their backpacks and make sure they are stocked for success for this new semester.

We will begin the semester with Topographic Maps, then lead into the second part of Astronomy with the Universe.

Darlene Thompson  
 SBMS 8th Grade Science  
 (830) 885-8800

## Yearbooks! Yearbooks! Yearbooks!

Don't forget to order your yearbooks now! The price goes up \$5 on February 1st, so go online now and reserve your student's book of memories. All color, all 140 pages, all FUN! Go to [www.jostensyearbooks.com](http://www.jostensyearbooks.com)

to make your order now!



## GT News...

On Saturday December 17th, the 8th grade GT class had a volunteer work day to benefit St. Jude's Ranch for Children. The students and a handful of parents accompanied Mr. Mann to the ranch where they spent several hours helping organize and wrap the hundreds of presents that were to be delivered to the St. Jude's kids, as well as kids at other local children's facilities. After several hours of wrapping, the GT kids joined some of the students and staff at the ranch for a picnic lunch that the GT parents provided. Once all the work and eating was finished, everyone joined in and played some crazy games of volleyball, kickball, and basketball. When all was said and done, the St. Jude's staff was extremely grateful for the holiday help, and the bonds created between our students and theirs. Mr. Mann and the students promised to come back again in the spring for more fun and volunteer work. It was a terrific way to start our holiday break, with a day of giving to help others.

Troy L. Mann  
GT Instructor 6/7/8  
Yearbook Advisor  
Electives Department Chair



## From the Math Department...

*Can't believe the first semester is over. As we begin the second semester please replenish school supplies; paper, pencils, journals. Check with your child to see what supplies he/she needs.*

*We are looking forward to starting Geometry in Pre-Algebra. Exponents, Quadratics and Polynomials await us in Algebra 1.*

*Tena O'Connor*

*SBMS Math Department Chair*

*8th Pre-Algebra*



## SBMS Science Department Wants Your Box Tops!



Clip, clip, clip to help your child's Science Department!

We need your help this year raising money for our school and the science department at SBMS. Box Tops for Education are an easy way to help your school earn money to help enrich the learning of all students. It's very simple to do and to use. All you have to do is go to <http://www.boxtops4education.com/default.aspx> and sign up and choose our school as your school of preference. Then you get to start shopping!! Below are the

ways you can help us earn money for your children and their classrooms. You can shop online, clip out or get bonus tops to earn our school points. Each Box Top we get from you is 10¢ you give towards your children's education. We collect Box Tops all year long!! Happy Shopping!!

Lindsey B. Fleming  
7th grade science/ UIL science coach

## Spring Branch STAR Bowlers

The Spring Branch STAR bowlers finished the season with fists full of medals. The sixteen bowlers were from the classes of Cheryl Miller and Margot Connor. The bowlers practiced weekly with middle and high schools across the district. For the final competition, the bowlers were paired competitively and



all of the Spring Branch bowlers turned in career-best scores.

Congratulations to you all!

Margot Connor  
Essential Academics  
Spring Branch Middle School  
[margot.connor@comalisd.org](mailto:margot.connor@comalisd.org)

## Break a Leg! News from Theater Arts...

SBMS Theatre Department will hold auditions on January 23 and 24 for the Spring production of *The Hamlet Thrill-Ma-Geddon* by Don Zolidis, a comedy spoof of Shakespeare's original drama. The performance dates are April 16 and 17 at

7pm and April 18 at 5 pm.

The department will also be taking *Charlotte's Web* to One Act Play festival at Canyon High School on April 30th.

*Belinda Maddox*

*Theatre Arts*

*Spring Branch Middle School*



## SBMS Library News...



The library has a blog site and Twitter account!

The library has technology equipment available for check out to students. We currently have ten iPod touches, two iPads, and four Dell Netbooks. Students wishing to check out any of these items must have a parent come to the library to sign a permission slip. We are very excited to have the opportunity to provide these devices for our students. For questions, please contact the librarian, Melodye Revell, at [melodye.revell@comalisd.org](mailto:melodye.revell@comalisd.org) or 830-885-8815.

Did you know that SBMS library has a blog and a twitter account? Check these out for library news and information. The blog also has a page for book discussion so that we can share the books we have read and are currently reading.

SBMS Library blog: <http://wp.comalisd.org/librarynews>

SBMS library twitter: <http://twitter.com/SBMSLibrary>

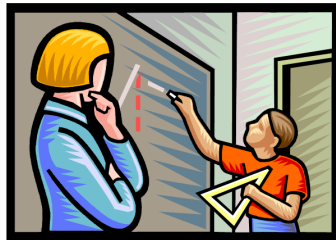
For more information please contact:

Melodye Revell, MLS  
 Librarian  
 Spring Branch Middle School  
 830-885-8815  
 830-885-8872  
[melodye.revell@comalisd.org](mailto:melodye.revell@comalisd.org)

<http://staff.comalisd.org/melodye.revell>

## A Great Place to Learn—The Wrangler Scholar Center!

The Wrangler Scholar Center is a new resource for students to support student academic success. The center provides needed technological resources to enable all students to reach maximum potential. The center has a support system for different styles of learning. It offers a comfortable environment for students to discover multiple ways to learn and understand any academic subject.



ogy. It is a connection to the local, state, national, and global communities. The WSC focuses on independent study, targeted tutorials, and

group collaboration. It is student driven, research readiness, and encourages students to access and master technology.

4:30, Monday - Thursday. To schedule a pass, please come by the WSC for more information. Teachers schedule students in the center throughout the day for academic acceleration and supplemental support. Please contact the Wrangler Scholar Center for more information.



Susan Petri and Marilyn Santleben  
 830-885-8830 - WSC

[susan.petri@comalisd.org](mailto:susan.petri@comalisd.org)  
[m.santleben@comalisd.org](mailto:m.santleben@comalisd.org)

The Center presents an opportunity for teachers and students to learn from each other, with the assistance of current technol-

The WSC is open every morning at 7:45 AM, during all lunches with a pass, and for scheduled after school tutorials from 4:00 -

## Like Us on Facebook!

**Like us on Facebook!! SBMS PTA is now on Facebook:**

<http://www.facebook.com/pages/Spring-Branch-Middle-School-PTA/192400177496480>



## G-Force is Back!

Back by popular demand! G-Force has returned to Mrs. Connor's room. G-Force is indeed just like the mighty guinea pig from the movie by the same name. The students have learned all about the little critter, also called a cavy, and practice animal health care daily. Students use stethoscopes to listen to his heart, check his nails and teeth for trimming and watch as Mrs. Connor takes his temperature. (Mrs. Connor is a certified veterinary technician.) The students have been learning about My PLATE - a new twist on the eating healthy



pyramid - and have taken G-Force to task on his big belly and love of yogurt drops. The students help him exercise more by walking daily, encourage him to stick with fresh apples, carrots and dark greens and to obtain his required Vitamin C through oranges. The students don latex gloves to clean his cage and they all admit this is not the favorite part of his care but is very necessary to ensure a long, healthy life for their little friend.

Margot Connor  
Essential Academics  
Spring Branch Middle School  
[margot.connor@comalisd.org](mailto:margot.connor@comalisd.org)

## How Can You Become More Active at SBMS?

### Feel out of the loop?

There are many ways you can plug into to SBMS!

One of the best ways to plug into school and meet other parents is to volunteer! PTA has many opportunities throughout the school year.

Here are some of the positions:

Staff Appreciation, Arts/Reflections Committee, End of Year Parties, Dance Committee, Concession Stand, Wrangler Round Up, and the Environmental Committee.

If you are interested in learning more about any of the above opportunities, please email our Volunteer Coordinator, Christina Zeug, at [bennkirsten@yahoo.com](mailto:bennkirsten@yahoo.com).

The school and PTA have made concerted efforts to ensure parents receive important news and information through website, listserv email, Hot News, Facebook, Twitter, Studywiz and the SBMS online Calendar.

### How Can You Learn More About SBMS PTA?

Please consider becoming a member of SBMS PTA. Once you are a member you will receive periodic listserv emails. SBMS PTA wants to keep you informed as much as possible and in

addition to our quarterly newsletter, we now have a website ([www.sbmspta.my-pta.org](http://www.sbmspta.my-pta.org)), and we hope you will "Like" us on Facebook (Spring Branch Middle School PTA).

### How Can You Learn More about School News and Activities?

Stay Connected!

SBMS Website: <http://www.comalisd.org/Schools/SBMS/>

"Like" the school on Facebook:

<http://www.facebook.com/pages/CISD-Spring-Branch-Middle/218860881495152>

Follow the school on Twitter:  
SBMSWrangler1 (Case Sensitive)

CISD "Hot News" (via e-mail):

Go to [www.comalisd.org](http://www.comalisd.org)  
Click on the "Contact Us" tab  
Select "Subscribe to "Hot News"

Studywiz:

Go to <https://studywiz.comalisd.org/>  
Click on the "Parent Registration" icon

SBMS online calendar:

<https://sps.comalisd.org/news/Calendars/Lists/SBMS/calendar.aspx>

Are you plugged in?

Please visit and bookmark the SBMS PTA site!

[www.sbmspta.my-pta.org](http://www.sbmspta.my-pta.org)

## Congratulations to the 2011-2012 Reflections Winners!



### 2011-2012 SBMS Reflections Contest Winners

#### Award of Excellence

- Carly Dugosh – “World Culture” (Visual Arts)
- Madeline Ferguson – “The Face of Many” (Visual Arts)
- Erica Martinez – “World Flags” (Visual Arts)
- Juliana Martinez – “Tied Together by Musical Notes” (Visual Arts)
- Anet Navarro – “Best Friends Forever” (Visual Arts)
- Hannah Presley – “Come Together” (Visual Arts)

#### Award of Merit

- Jadyn Ashcroft – “Travis Johnston” (Literature)
- Brock Bradford – “Americas Beauty” (Visual Arts)
- Emily Cappello – “The Mask We Hide Under” (Visual Arts)
- Catherine Carr – “Recipe for America” (Visual Arts)
- Cameron Collazo – “Bright Beauty” (Visual Arts)
- Giselle Kowalski – “Ocean Realm” (Visual Arts)
- McKaila Leonard – “Interest Notes” (Visual Arts)
- Leaha Scott – “Let Your Lives Shine Through” (Visual Arts)

#### Honorable Mention

- Shannon Gibbs – “The Dragon” (Visual Arts)
  - Ethan Katz – “United Nations” (Visual Arts)
  - Kaycee Kozekwa – “Happy Birthday” (Visual Arts)
  - Nicholas Kuykendall – “Fields of Diversity” (Visual Arts)
  - Lexi Pace – “Fashion Fever” (Visual Arts)
  - Mitchell Rhodes – “Up in the Air” (Visual Arts)
  - Abigail Rogers – “Fun Fashion” (Visual Arts)
  - Sierra San Roman – “Soccer Fun” (Visual Arts)
  - Simon Williams – “Diversity Makes Me” (Visual Arts)
  - Matthew Zillmann – “The NFL” (Visual Arts)
-

## SBMS PTA

Spring Branch Middle School  
21053 Hwy 46 W  
Spring Branch, TX 78070

Phone: 830-885-8800  
E-mail: [comalsbms@gmail.com](mailto:comalsbms@gmail.com)

Every child. One Voice.

We are on the Web!

[www.sbmspta.my-pta.org](http://www.sbmspta.my-pta.org)



We run many projects throughout the year to benefit our school and the education of our children. From Wrangler Round Up to dances, it all happens through the PTA! Get involved - join our PTA today.

To join SBMS PTA and receive all the benefits contact

Anne Viera at  
[anneviera@yahoo.com](mailto:anneviera@yahoo.com)

### Why Join the Spring Branch Middle School PTA?

The #1 reason to join SBMS PTA is to support your school and your student. This PTA is dedicated to enhancing the educational experience for every student. Membership also entitles you to a vote and a voice as to the direction of the SBMS PTA. Joining the PTA does not automatically obligate you to be a school volunteer, but opportunities are available if you choose.

All PTA members receive a FREE copy of the 2011-2012 SBMS directory.

Texas PTA members are eligible for discounts from Barnes and Noble, T-Mobile, Sea World, Fiesta Texas, Dell Computer, Schlitterbahn, Sharp and many more.

Please visit the PTA website, [www.sbmspta.my-pta.org](http://www.sbmspta.my-pta.org), for information on current events. For more information on Texas and National PTA issues, you can log on to [www.txpta.org](http://www.txpta.org) and [www.PTA.org](http://www.PTA.org) respectively.

Thank you again for your support and we look forward to working with you on behalf of your children.

Anne Viera, Membership Chair ([anneviera@yahoo.com](mailto:anneviera@yahoo.com))

### SBMS PTA Membership Form 2011-2012 (please print clearly)

Please list all SBMS students in your family

Name: \_\_\_\_\_ Grade \_\_\_\_\_ Teacher \_\_\_\_\_

Name: \_\_\_\_\_ Grade \_\_\_\_\_ Teacher \_\_\_\_\_

Member Name: \_\_\_\_\_ @\$7.50

Member Name: \_\_\_\_\_ @\$7.50

Texas Life Member Award Recipient \_\_\_\_\_ @\$5.25

TOTAL: \$ \_\_\_\_\_ (checks payable to SBMS PTA)

Address: \_\_\_\_\_

City/Zip: \_\_\_\_\_ Contact Phone: \_\_\_\_\_

email address: \_\_\_\_\_

Can PTA send information to you via email? Yes / No (circle one)

Cash \_\_\_\_\_ Check# \_\_\_\_\_