

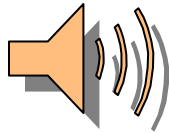


# The Branch News

Fall 2011

Spring Branch Middle School PTA  
Quarterly Newsletter

Spring Branch Middle School  
21053 Hwy 46 W  
Spring Branch, TX 78070  
(830) 885-8800



## Principally Speaking...

Dear Wrangler Community,

### Inside this issue:

SBMS PTA has a new Website	2
School Fall Dance	2
Creative Students Wanted!	2
Homecoming Mums and Garters	3
PTA Reflections Program	3
Science Dept Needs Your Box Tops!	4
Veteran's Day Celebration	4
Theater Arts News	4
Library News	5
The Wrangler Scholar Center	5
Like Us on Facebook!	5
Spirit Days 2011	6
Plug in to SBMS!	6
4th Annual Wrangler Round Up!	7
Join SBMS PTA!	8

I cannot believe October is already here! It just seems like yesterday that we started the 2011-12 school year. Thinking back to the start of the year, I cannot remember a better beginning in terms of transitioning students from summer mode to getting focused on academic success. As I visit classrooms each day, I am always impressed by what our students are doing and the expertise of our talented educators. It makes me proud to be a Wrangler!

I wanted to thank all of the parents who attended my first "Chat with the Principal" on September 28. During this meeting, I discussed our goal to improve communication with our community and we also looked briefly at last year's TAKS results and what the future holds as we move to STAAR. I will be working with PTA to set up several opportunities throughout the year to meet with groups of parents to discuss the exciting things happening at SBMS!

As we approach the end of the first nine weeks, we are entering the point in the school year when we begin to identify those students in need of extra support to be successful at school. I wanted to briefly share some of the things we have in place to help all students succeed. First, the most basic key to success is making sure our students are here each and every day. We appreciate your support in getting your children here and ready to learn. Secondly, we provide tutorials for students each morning from 7:45 until 8:20. Students simply need a pass from you or a teacher to allow them into the academic areas of the building each morning. Third, new to SBMS this year is the Wrangler Scholar Center (WSC). This center is designed to provide support for all students. Students have access to a wide variety of technology, resource and tutoring help. The WSC is open before and after school and during all lunches. We will also begin extended tutoring hours after school starting October 24. Fourth, the library is open before and after school and during lunches for all students. Fifth, every Thursday in the fall, we will run a modified schedule for Focus Time. This extra time is built into the middle of the day to allow students to "focus" on academic success. We will increase Focus Time to two days a week during the Spring Semester. All of these items listed above are designed to ensure academic success for all of our 886 students.

One of the best things about being at Spring Branch Middle School is all of the many events and activities that take place around the campus. Please visit our calendar of events for all of the SBMS activities through December at <https://sps.comalisd.org/news/Calendars/Lists/SBMS/calendar.aspx>.

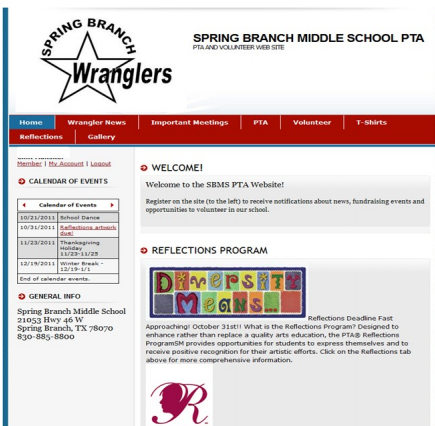
Thanks and have a great Wrangler day!

Chris J. Smith  
Principal

\* Bookmark us!! We have a brand-new website!

[www.sbmspta.my-pta.org](http://www.sbmspta.my-pta.org)

## Visit the Brand New SBMS PTA Website!



Each year SBMS PTA publishes a newsletter with news and information concerning various school functions and activities. In the past few years we went “green” and made the newsletter available electronically. In the same vein of keeping it “green”, we have developed a website that is updated weekly so that

you will have the most up-to-date information regarding all things PTA and all things SBMS!

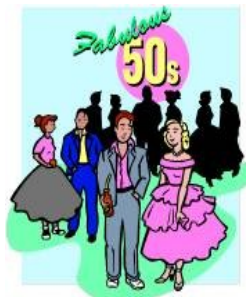
Please visit and bookmark our site!

[www.sbmspta.my-pta.org](http://www.sbmspta.my-pta.org)

## School Dance—“50's” Theme—October 21st—7-10 pm!!

Mark the date—Oct. 21st, 7-10 pm! Wristbands will be sold the day of the dance before school and during all lunches for \$5. Wristbands will also be sold at the door for \$7.

School dress code will be enforced and students must have their student ID and wristband to enter.



The Fall School Dance theme is “The 50's”

Drinks and merchandise will be sold. The theme is 50's. Chaperones will be limited and must have completed and approved background checks.

Please call Lisa Fields with questions at 210-884-7907 or [lisafields@gvyc.com](mailto:lisafields@gvyc.com)

## Attention ALL Middle School Students! Creativity Wanted!!!

Show your creativity through visual art, music, photography, literature, dance, or film/video production!

Each year the PTA Reflections Program provides a theme for students to express creativity through the arts. Student work is judged by an independent panel. A SBMS student went all

the way to the state level last year!

This year’s theme is “Diversity Means...”

Express your creativity through visual art, music, photography, literature, dance, or film/video production!

The October 31<sup>st</sup> deadline is fast approaching!

Please click on this link for a full description of the Reflections Program: <http://www.sbmspta.my-pta.org/Content.asp?PageID=15>

See page 3 of this newsletter for more participation information.

## Time to Purchase Your Homecoming Mum or Garter!

Homecoming is fast approaching! Don't miss your opportunity to purchase a mum or garter for that special someone.

The SBMS Cheer Booster Club will be at the school on Wednesdays at lunch time (11:30-1:30) and at the home football games selling mums for \$22 and garters for \$8, which includes 2 names and SBMS (additional personalization is \$1/ribbon). In addition, mums will be avail-



able for sale during lunch starting the week of October 17th-October 26th. All mums and garters must be picked up Wednesday October 26th after school.

If you have any questions, call or email Lisa Fields @ 210-884-7907 or [lisafields@gvtc.com](mailto:lisafields@gvtc.com)

Thank you.  
SBMS Cheer Booster



## 2011-2012 Reflections Program

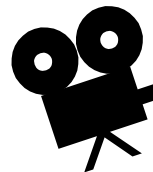
### Theme is "Diversity means..."

**Reflections is:** Creativity expressed through the arts. **Works are judged by their creativity, originality and interpretation of theme.**

#### Categories for Entry are:



- LITERATURE
- MUSIC COMPOSITION
- PHOTOGRAPHY
- VISUAL ARTS
- DANCE CHOREOGRAPHY
- FILM / VIDEO PRODUCTION



**DUE DATE:** **Monday, October 31, 2011.** (Entries can be turned in to the Reflections Drop Box located in the attendance office)

#### What are the Rules?



Each student must fill in an *official entry form* that is signed by a parent or guardian and secured to their work. Parents, friends, and teachers cannot help you. Your project must be yours alone. Be sure to explain how your work relates to the "**Diversity means...**" theme! This is very helpful to the judges. The following are *basic* rules. **Detailed instructions are available with the official entry forms.** All forms and rules may also be found online at: [www.txpta.org/programs/reflections](http://www.txpta.org/programs/reflections)

#### **Remember the theme!**

Think about "**Diversity means ...!**" and what the theme means to you. Be creative!

**Still have Questions? Contact: Summer Ford (SBMS Reflections Chair)**  
**210-380-2331 or [SummerLFord@gvtc.com](mailto:SummerLFord@gvtc.com)**

*All forms and rules may also be found online at: [www.txpta.org/programs/reflections](http://www.txpta.org/programs/reflections)*

## SBMS Science Department Wants Your Box Tops!



Clip, clip, clip to help your child's Science Department!

We need your help this year raising money for our school and the science department at SBMS. Box Tops for Education are an easy way to help your school earn money to help enrich the learning of all students. It's very simple to do and to use. All you have to do is go to <http://www.boxtops4education.com/default.aspx> and sign up and choose our school as your school of preference. Then you get to start shopping!! Below are the

ways you can help us earn money for your children and their classrooms. You can shop online, clip out or get bonus tops to earn our school points. Each Box Top we get from you is 10¢ you give towards your children's education. We collect Box Tops all year long!! Happy Shopping!!

Lindsey B. Fleming  
7th grade science/ UIL science coach

## Veteran's Day Celebration—November 11th

The SBMS Student Council is in search of pictures of anyone connected with SBMS and any branches of the United States Armed Forces. These pictures will be used as a part of our Veteran's Day Celebration that will take place November 11 at 10:00 am.

Included with the pictures should be the name of the person, the branch of military, rank (optional?),



Send in your Veteran's pictures by Oct. 21st!!

link to SBMS (Example: former student, Paige's grandpa, etc.), and anything else you deem important. A deadline is necessary: October 21st, 2011. This will give us time to include these photos in our presentation. Thanks for helping us collect these pictures and information. For further information please contact Lynda Senn [lynda.senn@comalisd.org](mailto:lynda.senn@comalisd.org) or Connie Chick [connie.chick@comalisd.org](mailto:connie.chick@comalisd.org).

## Break a Leg! News from Theater Arts...

Ms. Maddox and all the theatre students offer a great big thank you to our amazing PTA for agreeing to buy the pipe and drape for our new "black box" theatre (previously known as room 514).

Upcoming productions include *Charlotte's Web* by Joseph Robinette on December 5 and 6 at 7:00 pm and December 7 at 5:00 pm on the main

stage in the cafeteria. Intermediate Classes will be performing in the black box theatre the play, *O Little Town*, by Jerome McDonough on Nov. 30, Dec. 1 and 2 at 4:30. This performance will be the Christmas benefit show. There will be no admission charge but we will ask guests to bring a pantry item or new toy to be donated to White Christmas.



Upcoming productions include *Charlotte's Web* and *O Little Town*

## SBMS Library News...

The library now has technology equipment available for check out to students. We currently have ten Ipod touches, two iPads, and Dell Net-books. Students that wish to check out any of these items must have a parent come to the library to sign a permission slip. We are very excited to have the opportunity to provide these devices for our students. For questions, please contact the librarian, Melodye Revell at [melo-dye.revell@comalisd.org](mailto:melodye.revell@comalisd.org) or 830-885-8815.

Did you know that SBMS library has a blog and a twitter account? Check these out for library news and infor-



The library has a  
blog site  
and  
Twitter account!

SBMS Library blog: <http://wp.comalisd.org/librarynews>  
SBMS library twitter: <http://twitter.com/SBMSLibrary>

Thank you,  
Melodye Revell, MLS  
Librarian  
Spring Branch Middle School  
830-885-8815  
830-885-8872

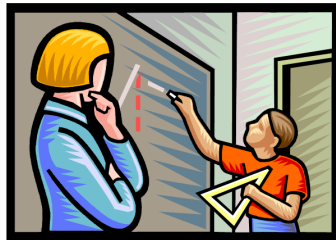
[melodye.revell@comalisd.org](mailto:melodye.revell@comalisd.org)

<http://staff.comalisd.org/melodye.revell>

mation. The blog also has a page for book discussion so that we can share books we have read and are currently reading.

## A Great Place to Learn—The Wrangler Scholar Center!

The Wrangler Scholar Center is a new resource for students to support student academic success. The center provides needed technological resources to enable all students to reach maximum potential. The center has a support system for different styles of learning. It offers a comfortable environment for students to discover multiple ways to learn and understand any academic subject.



The Center presents an opportunity for teachers and students to learn from each other, with the assistance of current technology. It is a connection to the local, state, national, and

global communities. The WSC focuses on independent study, targeted tutorials, and group collaboration. It is student driven, research readiness, and encourages students to access and master technology.

The WSC is open every morning at 7:45 AM, during all lunches with a pass, and for scheduled after school tutorials from 4:00 - 4:30, Monday - Thursday. To schedule a pass, please come by

the WSC for more information. Teachers schedule students in the center throughout the day for academic acceleration and supplemental support. Please contact the Wrangler Scholar Center for more information.



Susan Petri and Marilyn Santleben  
830-885-8830 - WSC  
[susan.petri@comalisd.org](mailto:susan.petri@comalisd.org)  
[m.santleben@comalisd.org](mailto:m.santleben@comalisd.org)

## Like Us on Facebook!

**Like us on Facebook!! SBMS PTA is now on Facebook:**

<http://www.facebook.com/pages/Spring-Branch-Middle-School-PTA/192400177496480>

## Spirit Days 2011—Show Your Wrangler Pride!

Sept 15—Rock Out the Mustangs—Dress like a Rock Star! (Pep Rally)

Sept 22—Sock it to the Jaguars—Crazy socks day!

Sept 29—Bee Bop the Breisemeisters—Dress in the 50's!

Oct 6—Unicorns are nerds—Dress up like a nerd!

Oct 13—Wranglers go Pink—Wear all Pink!

Oct 20—Boot Barnes—Wear favorite boots!

Oct 27—Black out the Panthers—Wear all black! (Pep Rally)

Nov 3—Camo the Cougars—Wear camo!



## How Can You Become More Active at SBMS?

### Feel out of the loop?

There are many ways you can plug into to SBMS!

One of the best ways to plug into school and meet other parents is to volunteer! PTA has many opportunities throughout the school year.

Here are some of the positions:

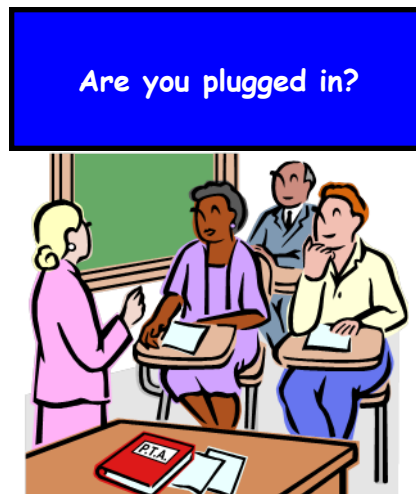
Staff Appreciation, Arts/Reflections Committee, End of Year Parties, Dance Committee, Concession Stand, Wrangler Round Up, and the Environmental Committee.

If you are interested in learning more about any of the above opportunities please email our Volunteer Coordinator, Christina Zeug, at [bennkirsten@yahoo.com](mailto:bennkirsten@yahoo.com).

The school and PTA have made concerted efforts to ensure parents receive important news and information through website, listserve email, Hot News, Facebook, Twitter, Studywiz and the SBMS online Calendar.

### How Can You Learn More About SBMS PTA?

Please consider becoming a member of SBMS PTA. Once you are a member you will receive periodic listserve emails. SBMS PTA wants to keep you informed as much as possible and in addition to our quarterly newsletter, we now have a website ([www.sbmspta.my-pta.org](http://www.sbmspta.my-pta.org)), and we hope you will “Like” us on Facebook (Spring Branch Middle School PTA).



### How Can You Learn More about School News and Activities?

Stay Connected!

SMBS Website: <http://www.comalisd.org/Schools/SBMS/>

“Like” the school on Facebook: <http://www.facebook.com/pages/CISD-Spring-Branch-Middle/218860881495152>

Follow the school on Twitter: SMBSWrangler1 (Case Sensitive)

CISD “Hot News” (via e-mail):  
Go to [www.comalisd.org](http://www.comalisd.org)  
Click on the “Contact Us” tab  
Select “Subscribe to “Hot News”

Studywiz:  
Go to <https://studywiz.comalisd.org/>  
Click on the “Parent Registration” icon

SBMS online calendar:  
<https://sps.comalisd.org/news/Calendars/Lists/SBMS/calendar.aspx>

# 4th Annual Wrangler Round-Up!

This year's Wrangler Round Up was a HUGE success and lots of fun! Thanks to all the players for participating and having a great time! Thanks to all of the parents who took time out of their schedules to come coach. Lastly, thanks to my refs, announcers, concession help and everyone who helped on game day, without you guys we would not have a game! See you next year!

Thanks for everything

Aimee Broussard  
Wrangler Round Up  
SBMS PTA



The 4<sup>th</sup> Annual Spring Branch Middle School Wrangler Round Up kicked off the 2011-2012 school year on Saturday, August 20. The "Back to the Branch" event is sponsored by the SBMS PTA. Girls from each grade level participated in a friendly game of Powder Puff Flag Football. The boys promoted school spirit with their peppy personalities, outrageous cheer costumes, and choreographed half time routines. All had a "Wrangler Good Time"!

The PTA would like to thank all of the many volunteers who came out and showed their Wrangler spirit in coaching, announcing games and helping in concessions. We look forward to another fun event next year!

GO WRANGLERS!

Wendy Nix  
Historian  
SBMS PTA



\*\*\*\*\*  
We are in need of 8th grade Wrangler Round Up pictures. At the time of this newsletter's publication we had not received any 8th grade photos! Please email them to [comalsbms@gmail.com](mailto:comalsbms@gmail.com) and the photos will be displayed on our website!  
\*\*\*\*\*

## SBMS PTA

Spring Branch Middle School  
21053 Hwy 46 W  
Spring Branch, TX 78070

Phone: 830-885-8800  
E-mail: [comalsbms@gmail.com](mailto:comalsbms@gmail.com)

Every child. One Voice.

We are on the Web!

[www.sbmspta.my-pta.org](http://www.sbmspta.my-pta.org)

# Texas PTA®

We run many projects throughout the year to benefit our school and the education of our children. From Wrangler Round Up to dances, it all happens through the PTA! Get involved - join our PTA today.

To join SBMS PTA and receive all the benefits contact

Anne Viera at  
[anneviera@yahoo.com](mailto:anneviera@yahoo.com)

### Why Join the Spring Branch Middle School PTA?

The #1 reason to join SBMS PTA is to support your school and your student. This PTA is dedicated to enhancing the educational experience for every student. Membership also entitles you to a vote and a voice as to the direction of the SBMS PTA. Joining the PTA does not automatically obligate you to be a school volunteer, but opportunities are available if you choose.

All PTA members receive a FREE copy of the 2011-2012 SBMS directory.

Texas PTA members are eligible for discounts from Barnes and Noble, T-Mobile, Sea World, Fiesta Texas, Dell Computer, Schlitterbahn, Sharp and many more.

Please visit the PTA website, [www.sbmspta.my-pta.org](http://www.sbmspta.my-pta.org), for information on current events. For more information on Texas and National PTA issues, you can log on to [www.txpta.org](http://www.txpta.org) and [www.PTA.org](http://www.PTA.org) respectively.

Thank you again for your support and we look forward to working with you on behalf of your children.

Anne Viera, Membership Chair ([anneviera@yahoo.com](mailto:anneviera@yahoo.com))

### SBMS PTA Membership Form 2011-2012 (please print clearly)

Please list all SBMS students in your family

Name: \_\_\_\_\_ Grade \_\_\_\_\_ Teacher \_\_\_\_\_

Name: \_\_\_\_\_ Grade \_\_\_\_\_ Teacher \_\_\_\_\_

Member Name: \_\_\_\_\_ @\$7.50

Member Name: \_\_\_\_\_ @\$7.50

Texas Life Member Award Recipient \_\_\_\_\_ @\$5.25

TOTAL: \$ \_\_\_\_\_ (checks payable to SBMS PTA)

Address: \_\_\_\_\_

City/Zip: \_\_\_\_\_ Contact Phone: \_\_\_\_\_

email address: \_\_\_\_\_

Can PTA send information to you via email? Yes / No (circle one)

Cash \_\_\_\_\_ Check# \_\_\_\_\_