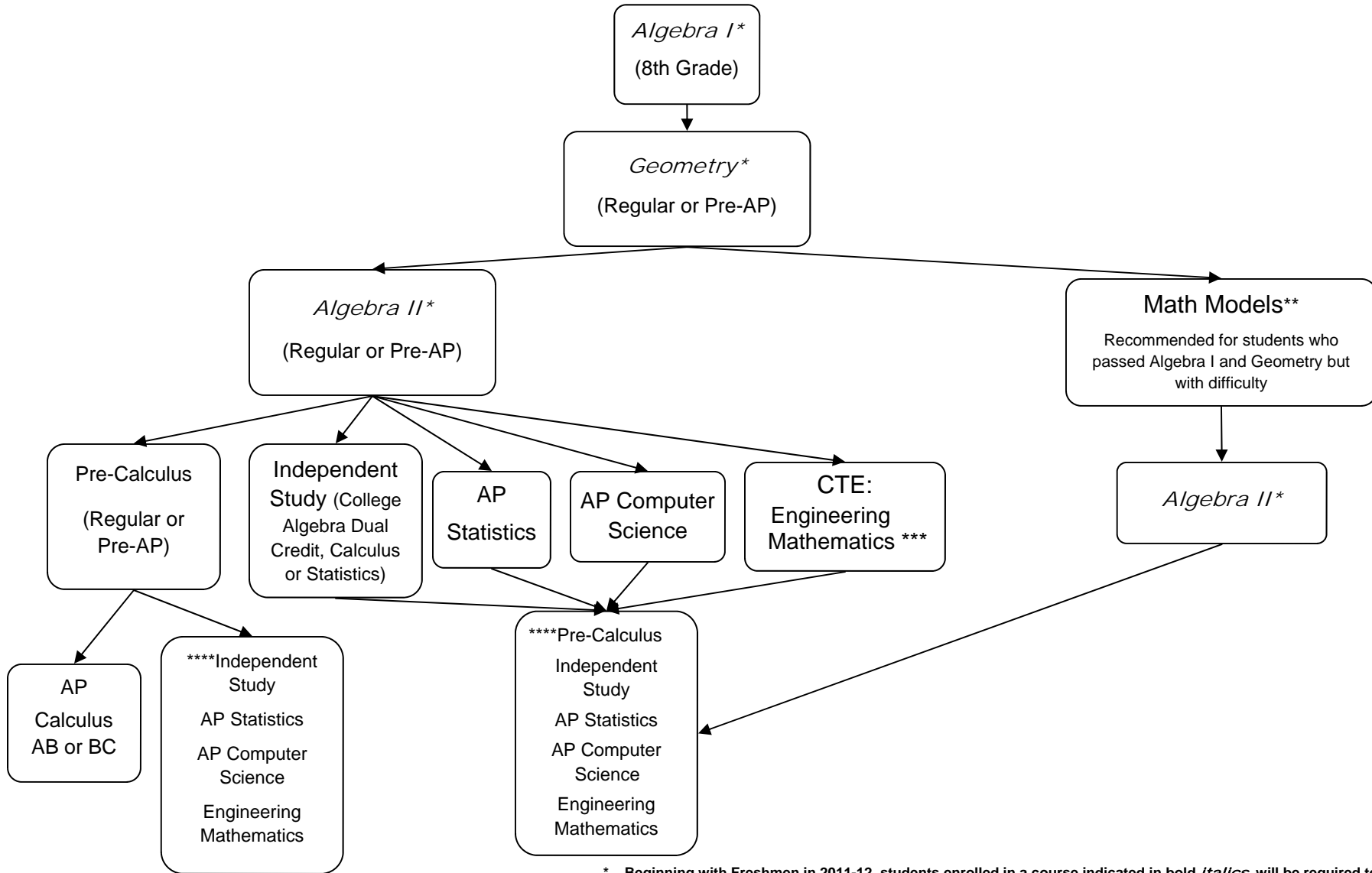


CISD High School Mathematics Course Sequence



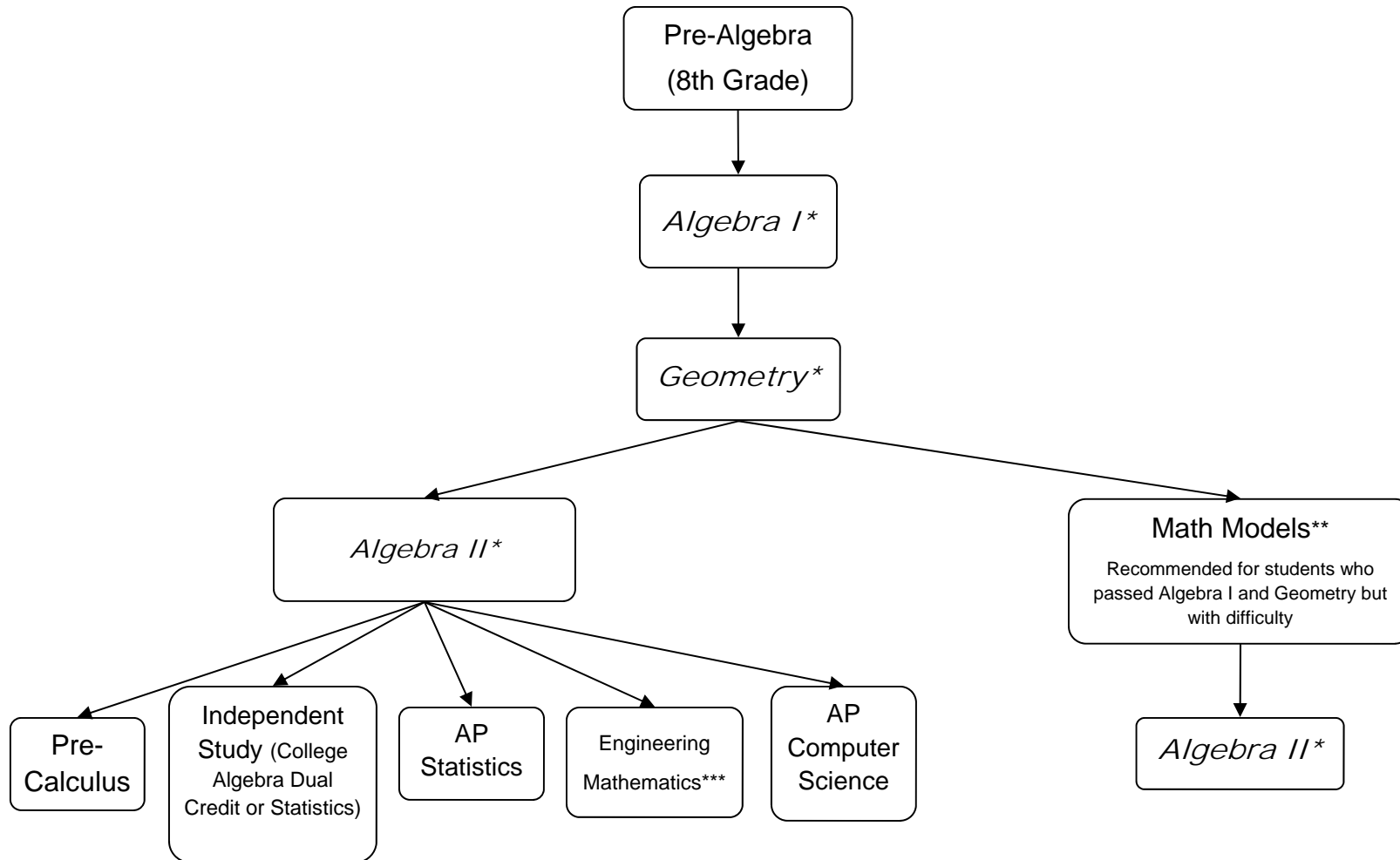
* Beginning with Freshmen in 2011-12, students enrolled in a course indicated in bold *Italics* will be required to take and pass an End-of-Course exam as part of the graduation requirements.

** For the 4x4 requirement, Math Models **MUST** be taken **BEFORE** Algebra II (not concurrently) for it to count as one of the 4 math credits under the Recommended Graduation Plan. Math Models does **NOT** count as a 4th math credit under the Distinguished Plan.

*** Engineering Math may count as a 3rd math credit under the Minimum Graduation Plan but must be the 4th math credit (after Algebra II) under the Recommended and Distinguished Plans.

**** All courses in this list qualify as a 5th year of math and may be taken at the discretion of the student. A 5th year of math is suggested but not required.

CISD High School Mathematics Course Sequence



* Beginning with Freshmen in 2011-12, students enrolled in a course indicated in bold *italics* will be required to take and pass an End-of-Course exam as part of the graduation requirements.

** For the 4x4 requirement, Math Models **MUST** be taken **BEFORE** Algebra II (not concurrently) for it to count as one of the 4 math credits under the Recommended Graduation Plan. Math Models does NOT count as a 4th math credit under the Distinguished Plan.

*** Engineering Math may count as a 3rd math credit under the Minimum Graduation Plan but must be the 4th math credit (after Algebra II) under the Recommended and Distinguished Plans.