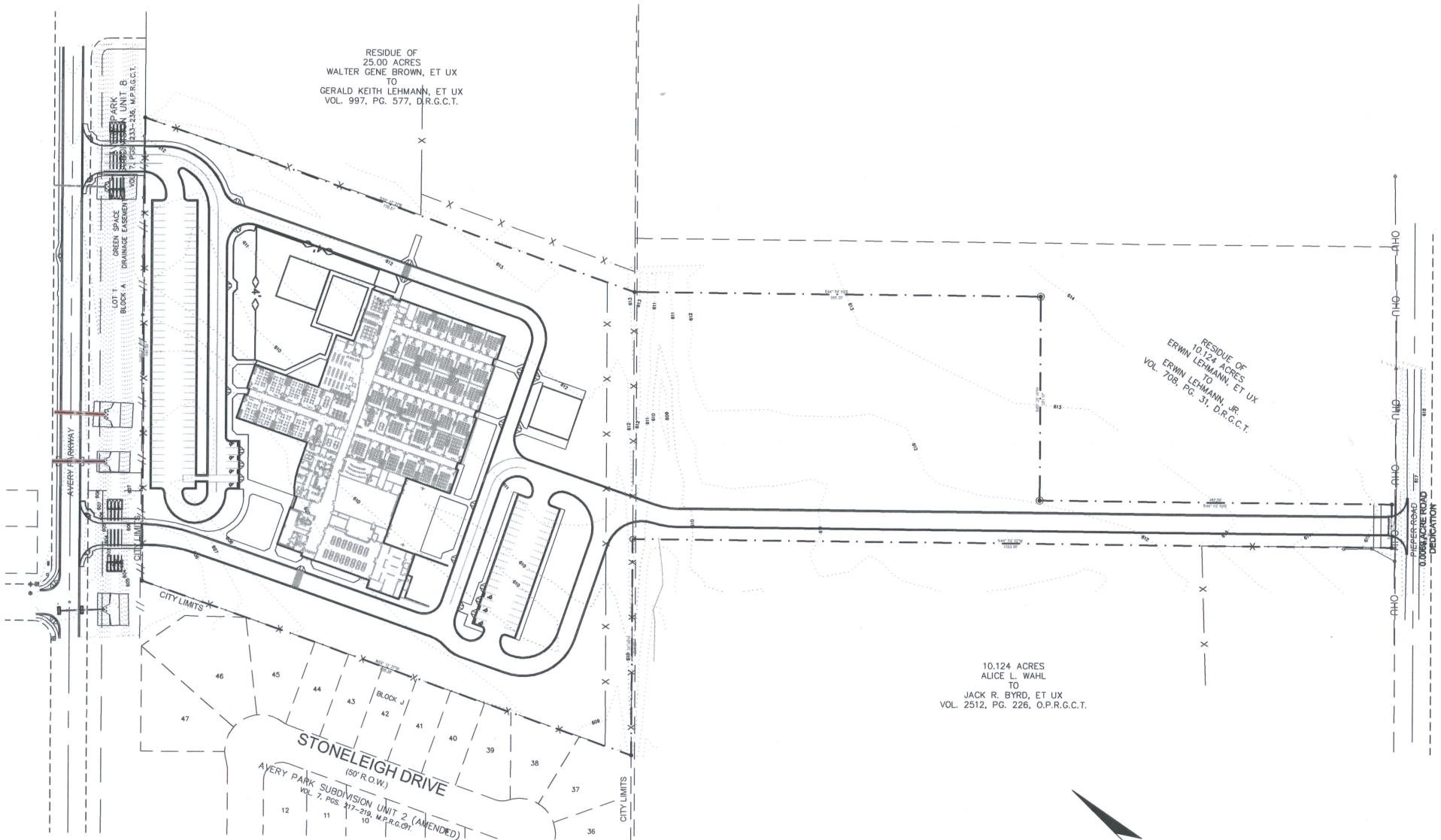


RESIDUE OF
25.00 ACRES
WALTER GENE BROWN, ET UX
TO
GERALD KEITH LEHMANN, ET UX
VOL. 997, PG. 577, D.R.G.C.T.

RESIDUE OF
10.124 ACRES
ERWIN LEHMANN, ET UX
TO
ERWIN LEHMANN, JR.
VOL. 708, PG. 31, D.R.G.C.T.

10.124 ACRES
ALICE L. WAHL
TO
JACK R. BYRD, ET UX
VOL. 2512, PG. 226, O.P.R.G.C.T.

STONELEIGH DRIVE
(50' R.O.W.)
AVERY PARK SUBDIVISION UNIT 2 (AMENDED)
VOL. 7, PGS. 217-219, M.P.R.G.C.T.



SCALE: 1" = 200'