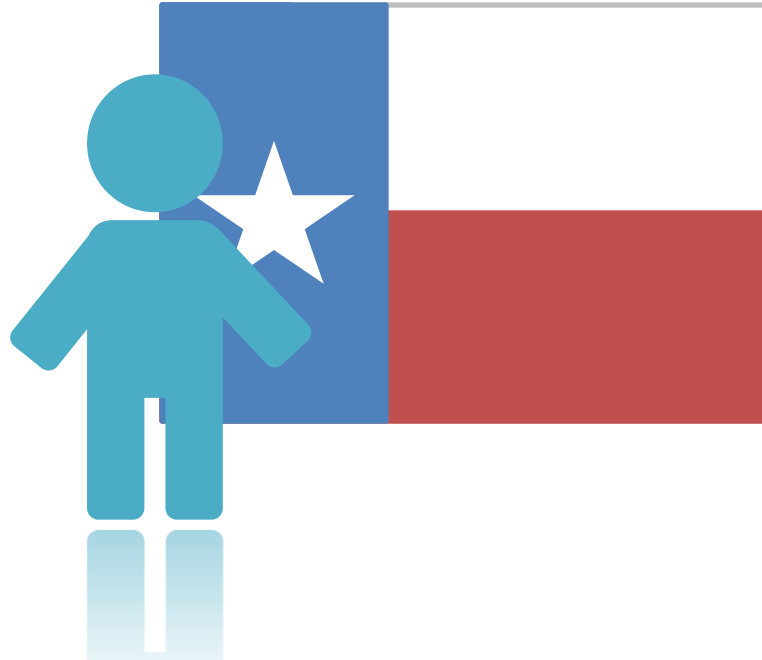


Academic Excellence Indicator System 2009-10



Annual Report and Public Hearing
Comal ISD
January 25, 2011

Accountability Standards 2010

Academically
Acceptable

Recognized

Exemplary

Math

60

80

90

Reading

70

80

90

Science

55

80

90

Social Studies

70

80

90

Writing

70

80

90

Other Indicators Evaluated



Completion Rate
Grades 9-12

{ Standard = 75% }



Dropout Rate
Grades 7-8

{ Standard = 1.8% }

Possible Ratings

Exemplary

Recognized

Academically Acceptable

Academically Unacceptable

Accessing the AEIS Report

TEXAS EDUCATION AGENCY

Home | District Locator | Index A-Z | Divisions | School Directory

Performance Reporting Home | SEARCH TEA's Site

Academic Excellence Indicator System

From this website you can access AEIS reports for every public school, district, or region of Texas.

AEIS reports for 2008-09 are now available.

Also available:

AEIS 2007-08 • AEIS 2006-07 • AEIS 2005-06 • AEIS 2004-05 • AEIS 2003-04
AEIS 2002-03 • AEIS 2001-02 • AEIS 2000-01 • AEIS 1999-2000
AEIS 1998-99 • AEIS 1997-98 • AEIS 1996-97
AEIS 1995-96 • AEIS 1994-95 • AEIS 1993-94

The **AEIS Archive** also has reports for **1992-93**, **1991-92**, and **1990-91**. Archival reports are also available from **1989-90** and **1988-89**: the **Annual Performance Reports (APR)**.

The **Multi-year History** shows selected AEIS data for **schools, districts, and the state**.

See **About AEIS** for a brief description and history of the Academic Excellence Indicator System. We also have answers to **Frequently Asked Questions**.

AEIS Glossary: Each year a new Glossary is produced for the AEIS, specific to that year. In researching the reports, it is important to refer to the glossary for the year in question. Significant changes in methodology are also addressed in the **Frequently Asked Questions** page.

School Report Cards for campuses are available through this site. Simply select the AEIS by year. The SRCs are available for every year since the 1997-98 school year.

Comparable Improvement reports are part of the AEIS reports and can be found within the appropriate year for the AEIS report, going back to the 1995-96 school year. Note that there are no Comparable Improvement reports for 2002-03 or 2003-04.

For questions regarding accessibility of Performance Reporting products for the visually impaired, contact **PR Accessibility**.

Multi-Year: Schools, Districts, State

AEIS Archive: 1992-93, 1991-92, 1990-91

APR Archive: 1989-90, 1988-89

Some of the content on this page may require one of the following plug-ins:

1 [Texas Education Agency](#)

2 [CISD Website](#)

3 [CISD Schools - Front Office or Library](#)

2010 AEIS Report Overview

Section I – District/Campus Performance

- TAKS Performance/Participation
 - *Disaggregated by grade level and student group*
- Attendance & Annual Dropout Rate
- Completion Rate
- College Readiness Indicators
 - *Advanced Courses/Dual Enrollment, RHSP and DAP Graduates, AP/IB Results, Higher Education Readiness Component (HERC), SAT/ACT Results, College-Ready Graduates (Class of 2009)*

2010 AEIS Report Overview

Section II – District/Campus Profile

- Student Information
 - *Demographics, Retention Rates, Class Size*
- Staff Information
 - *Demographics, Experience, Salary Information*
- Budget
 - *Revenues and Expenditures*
- Programs
 - *Student Enrollment, Teachers by Program*

2010 AEIS Report Overview

Section III – LEP Performance, District Only

- TAKS % Met Standard by BE/ESL Indicator
- Student Success Initiative
- Progress of Prior Year TAKS Failures

2010 TAKS Results without TPM

(2009 Scores Recalculated to include TAKS Accommodated)

	2009	2010	Change
Reading/ELA			
All Students	93%	95%	2
African Amer	92%	97%	5
Hispanic	88%	91%	3
White	95%	96%	1
Eco Dis	85%	88%	3
Writing			
All Students	95%	97%	2
African Amer	95%	94%	-1
Hispanic	93%	95%	2
White	96%	98%	2
Social Studies			
All Students	97%	98%	1
African Amer	95%	96%	1
Hispanic	95%	97%	2
White	99%	99%	0
Eco Dis	94%	96%	2

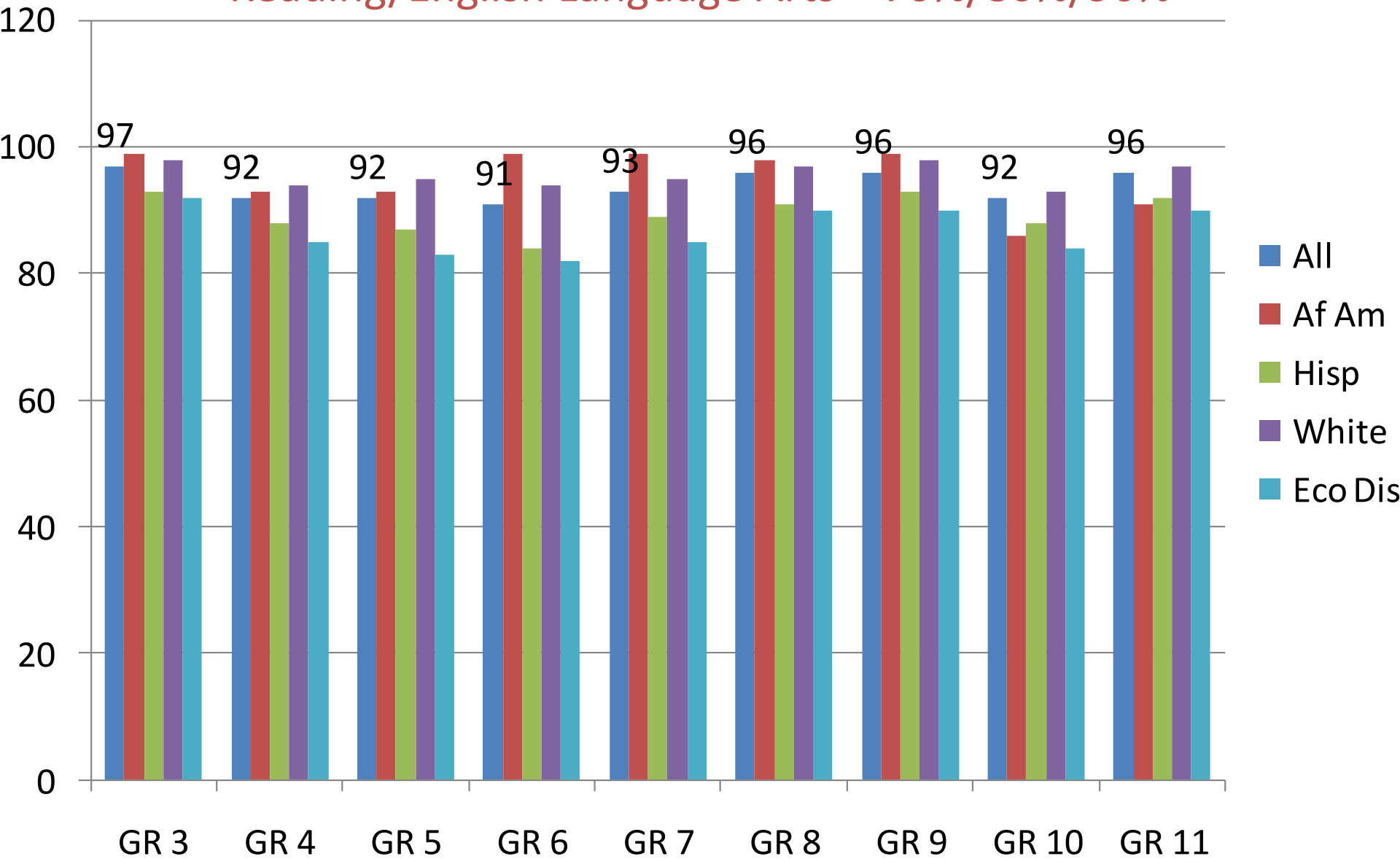
2010 TAKS Results without TPM

(2009 Scores Recalculated to include TAKS Accommodated)

Math	2009	2010	Change
All Students	87%	90%	3
African Amer	79%	90%	11
Hispanic	82%	86%	4
White	89%	92%	3
Eco Dis	78%	83%	5
Science			
All Students	87%	92%	5
African Amer	84%	88%	4
Hispanic	78%	85%	7
White	91%	95%	4
Eco Dis	75%	84%	9
Completers			
All Students	93.5%	94.7%	1.2
African Am	92.9%	96%	3.1
Hispanic	89.9%	91.5%	1.6
White	94.5%	95.6%	1.1
Eco Dis	84.4%	89.7%	5.5

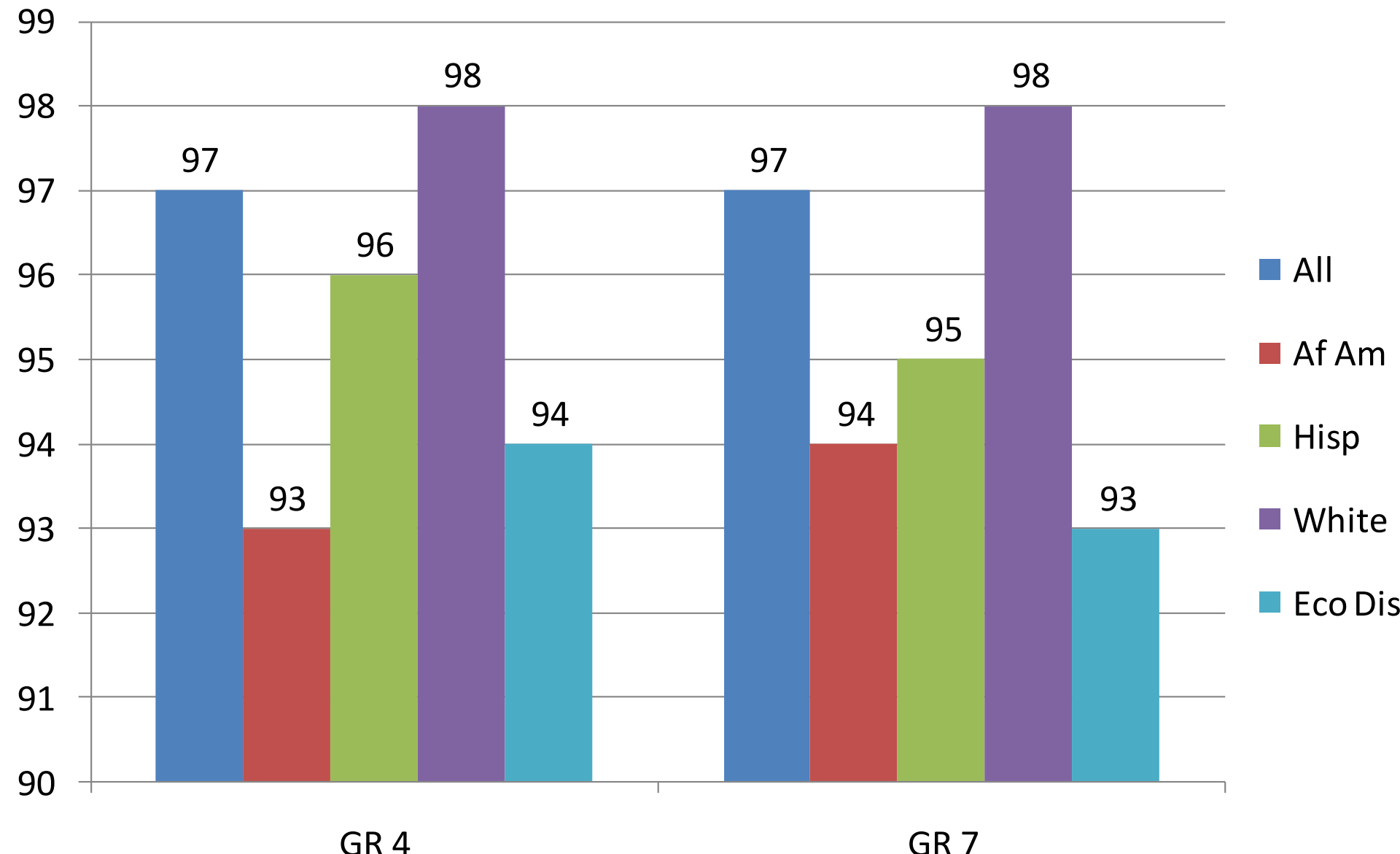
2010 TAKS Performance

Reading/English Language Arts – 70%/80%/90%



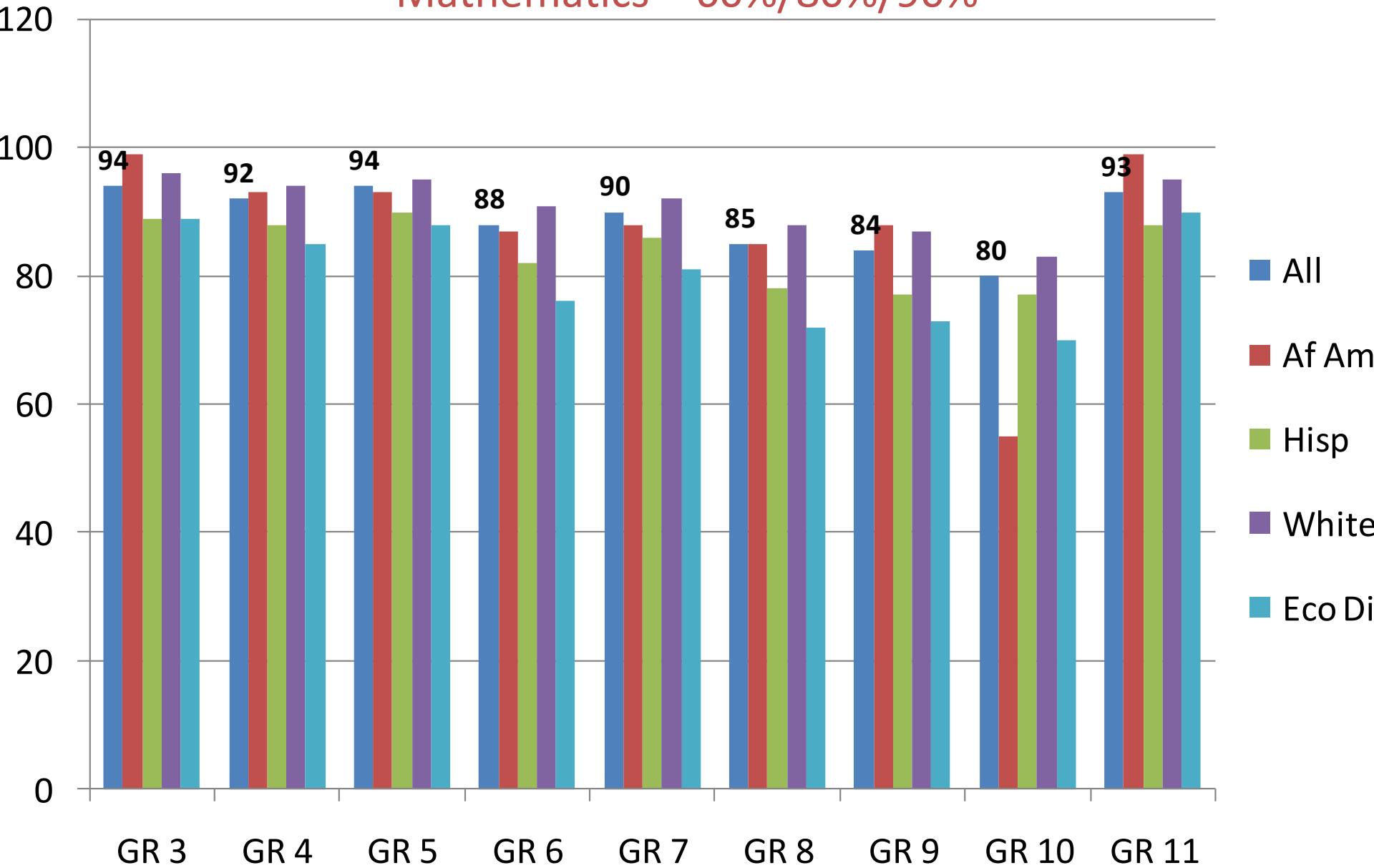
2010 TAKS Performance

Writing – 70%/80%/90%



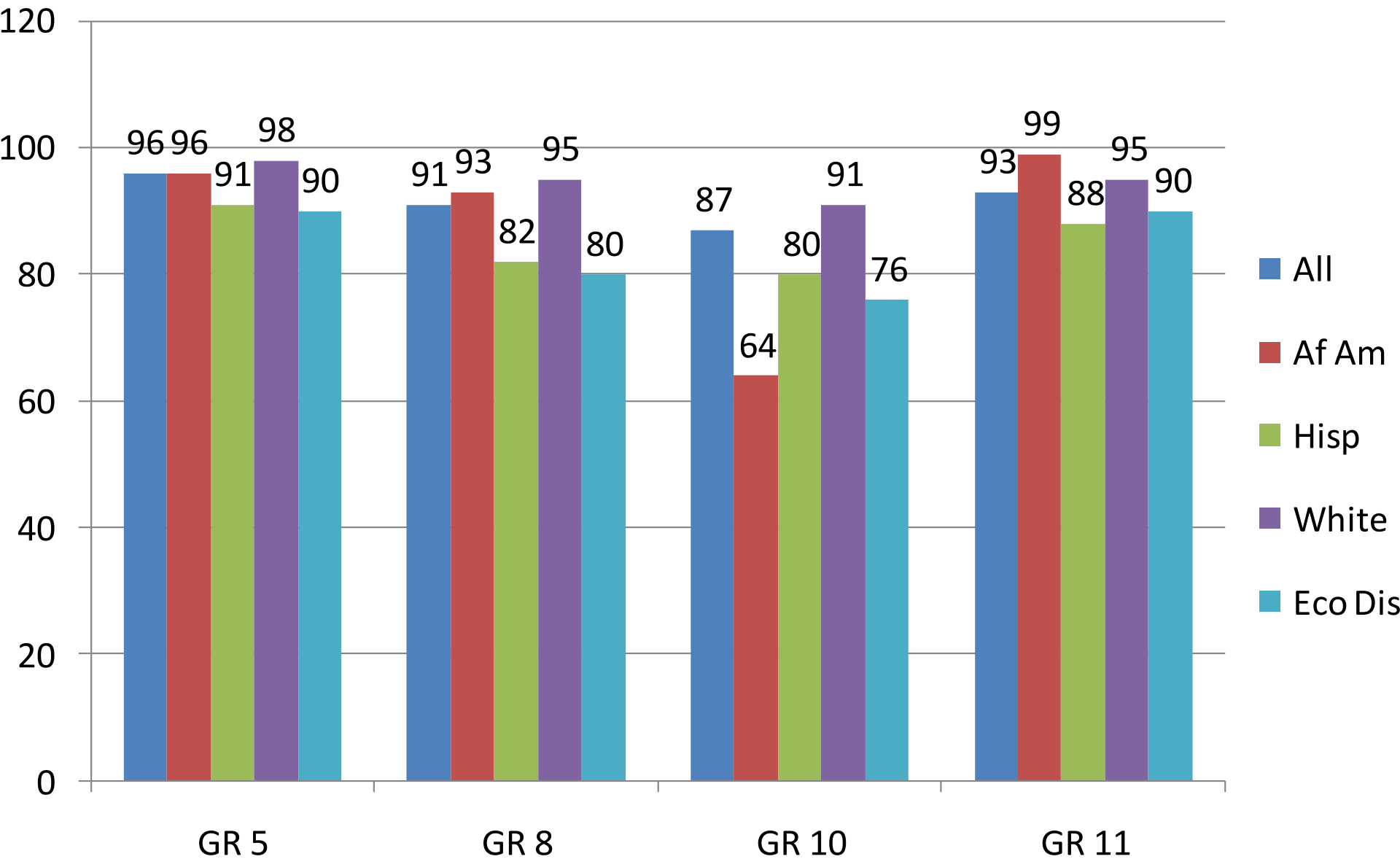
2010 TAKS Performance

Mathematics – 60%/80%/90%



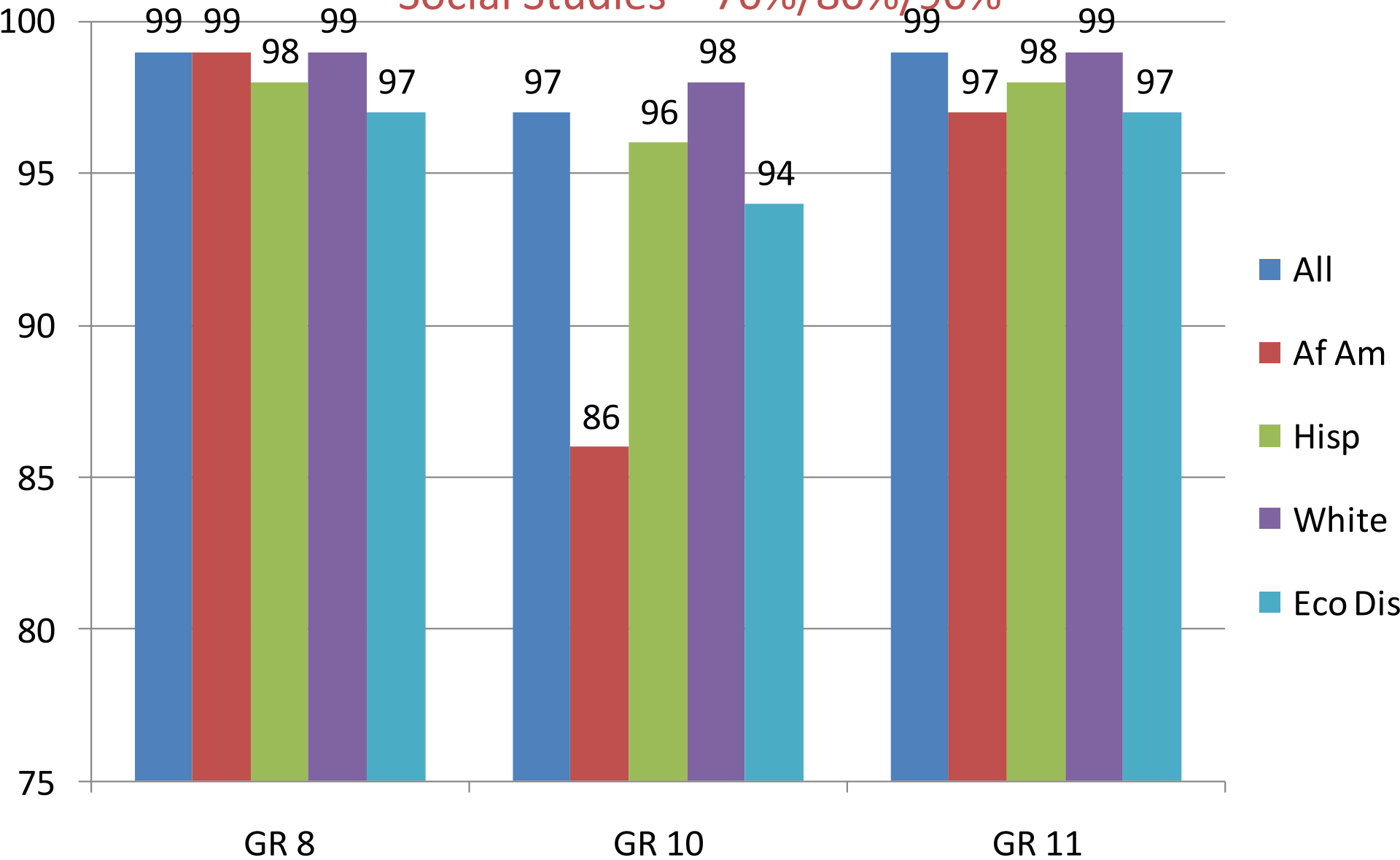
2010 TAKS Performance

Science – 55%/80%/90%



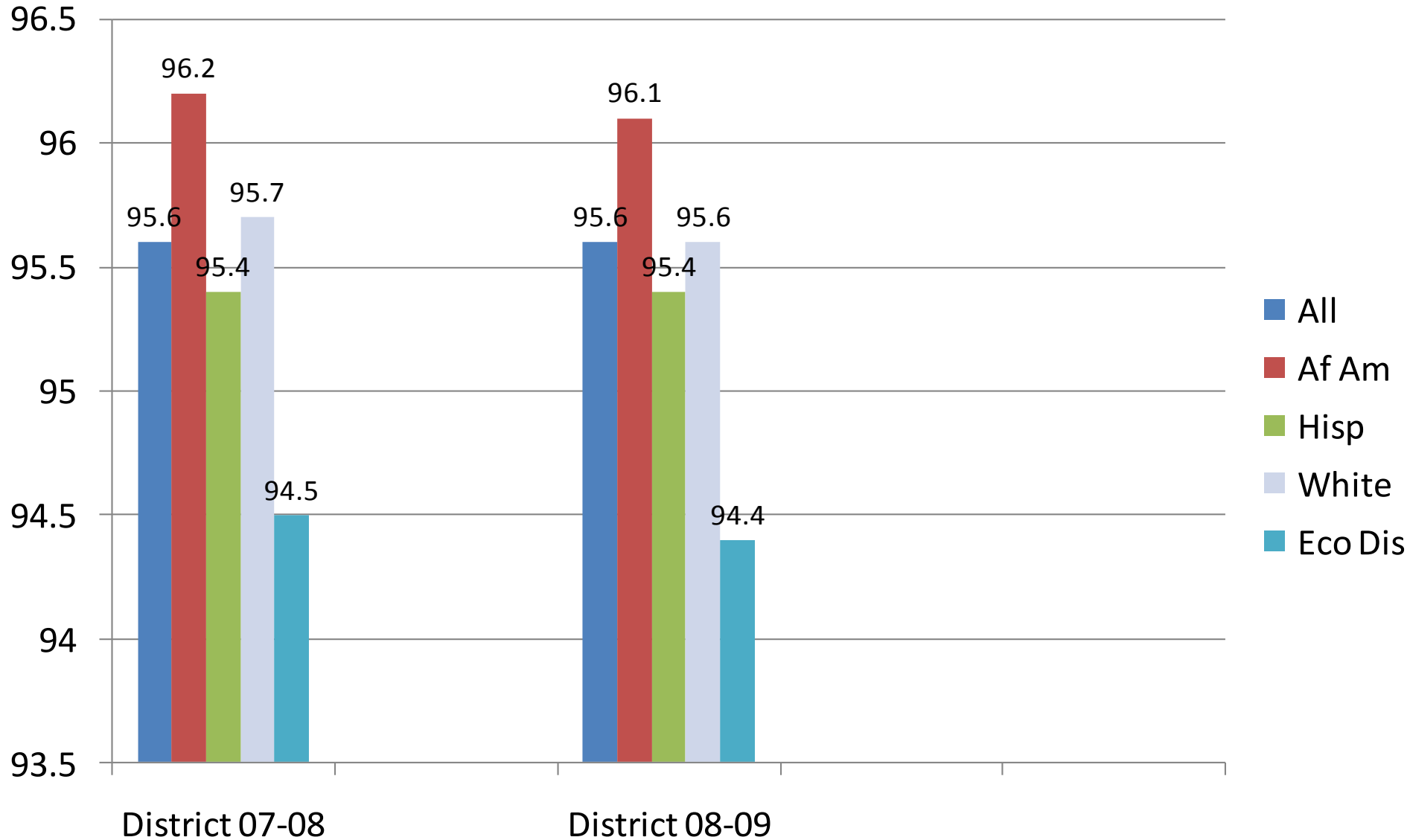
2010 TAKS Performance

Social Studies – 70%/80%/90%



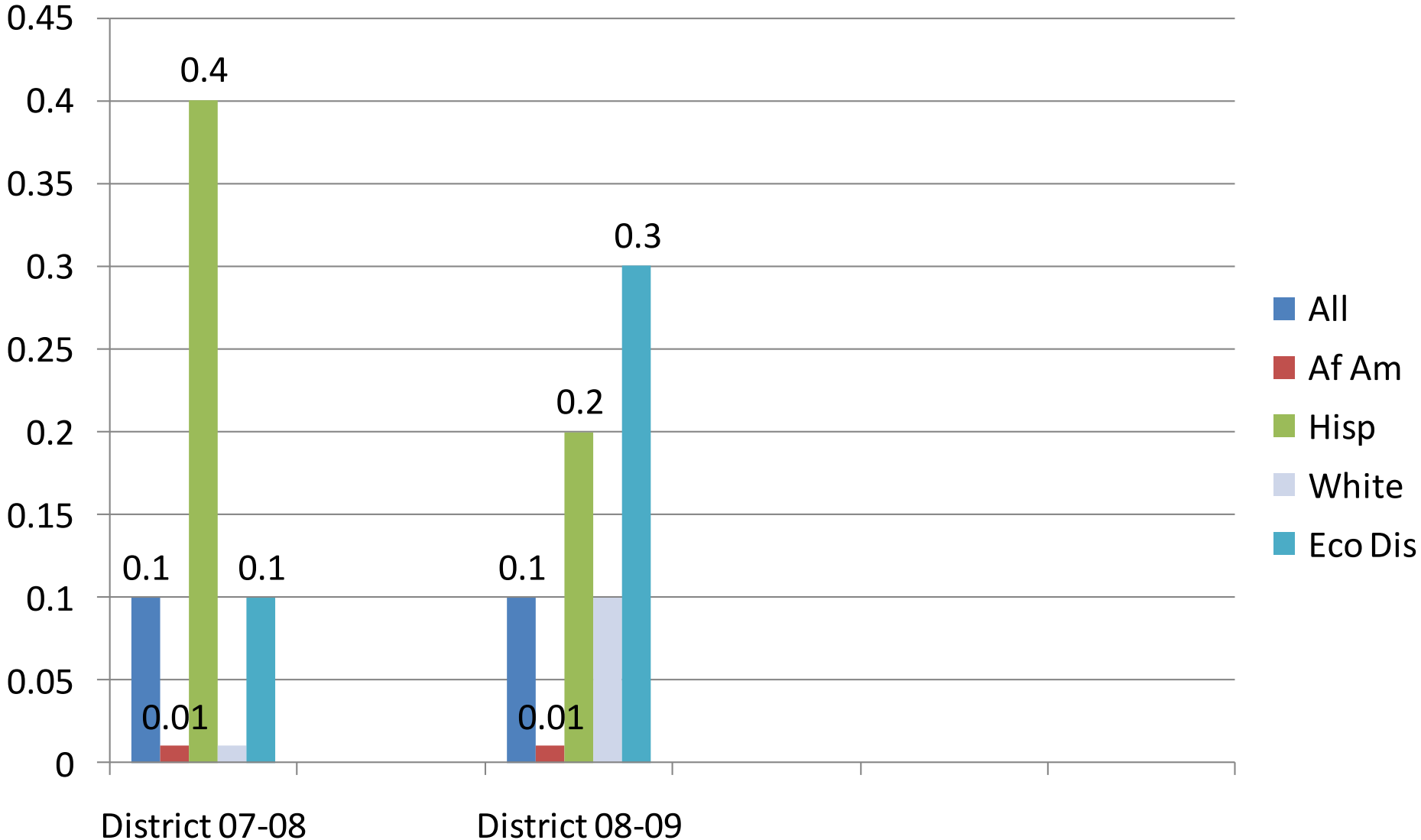
2010 Attendance

2008-2009 School Year



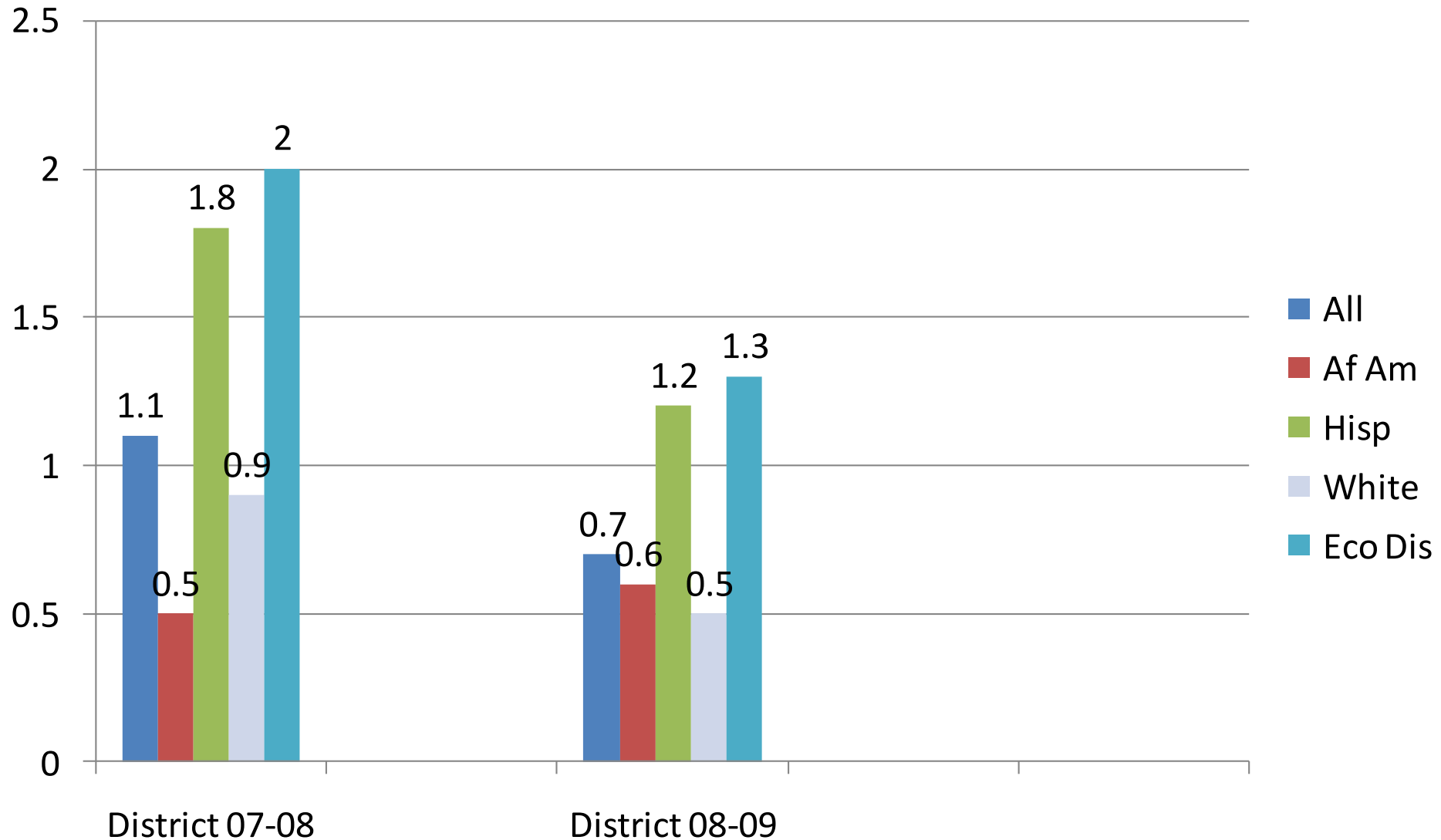
2010 Annual Dropout Rate (Grades 7-8)

2008-2009 School Year



2010 Annual Dropout Rate (Grades 7-12)

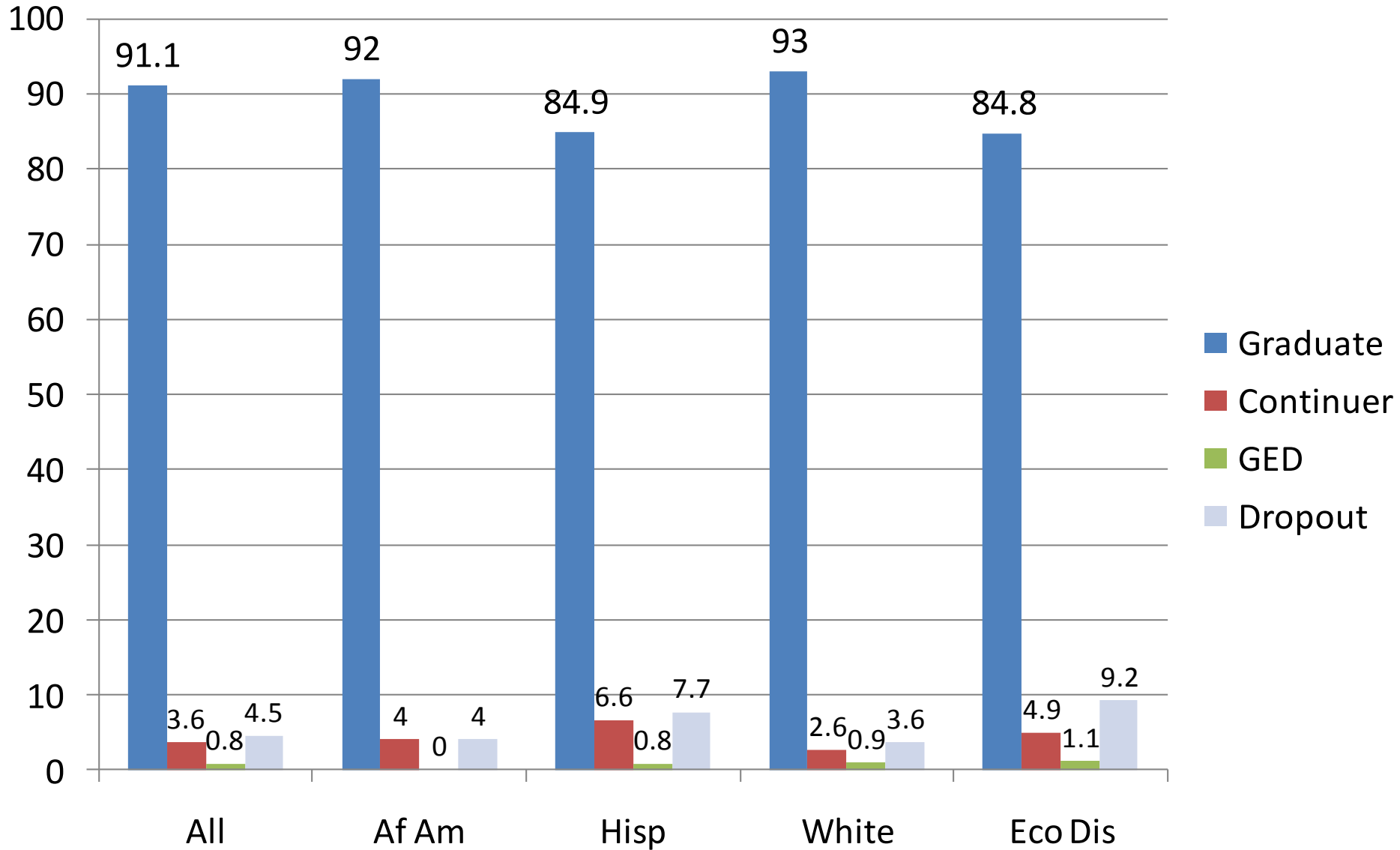
2008-2009 School Year, AEA Indicator



2010 Completion Rate I

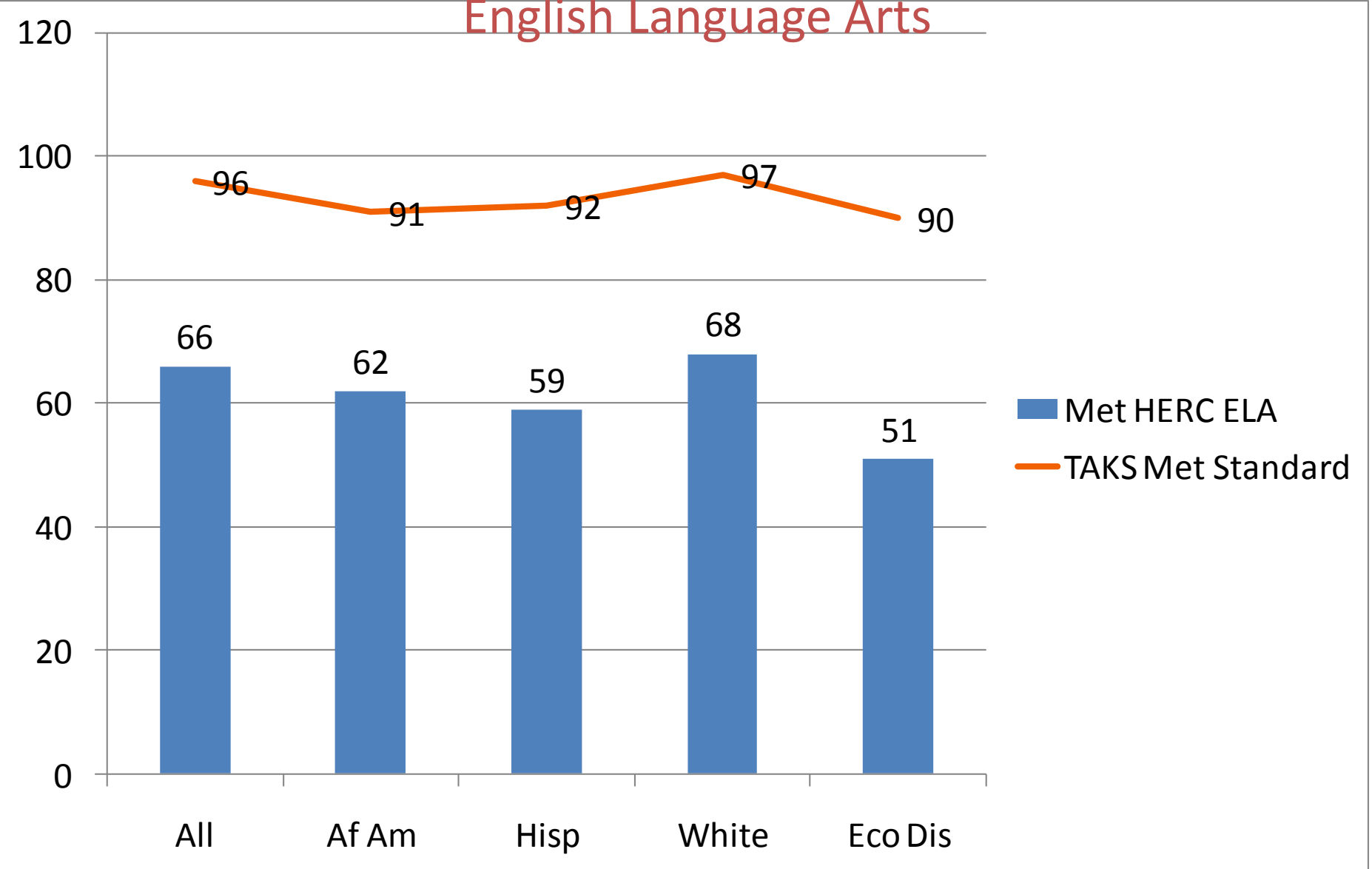
Class of 2009

Overall 94.7%

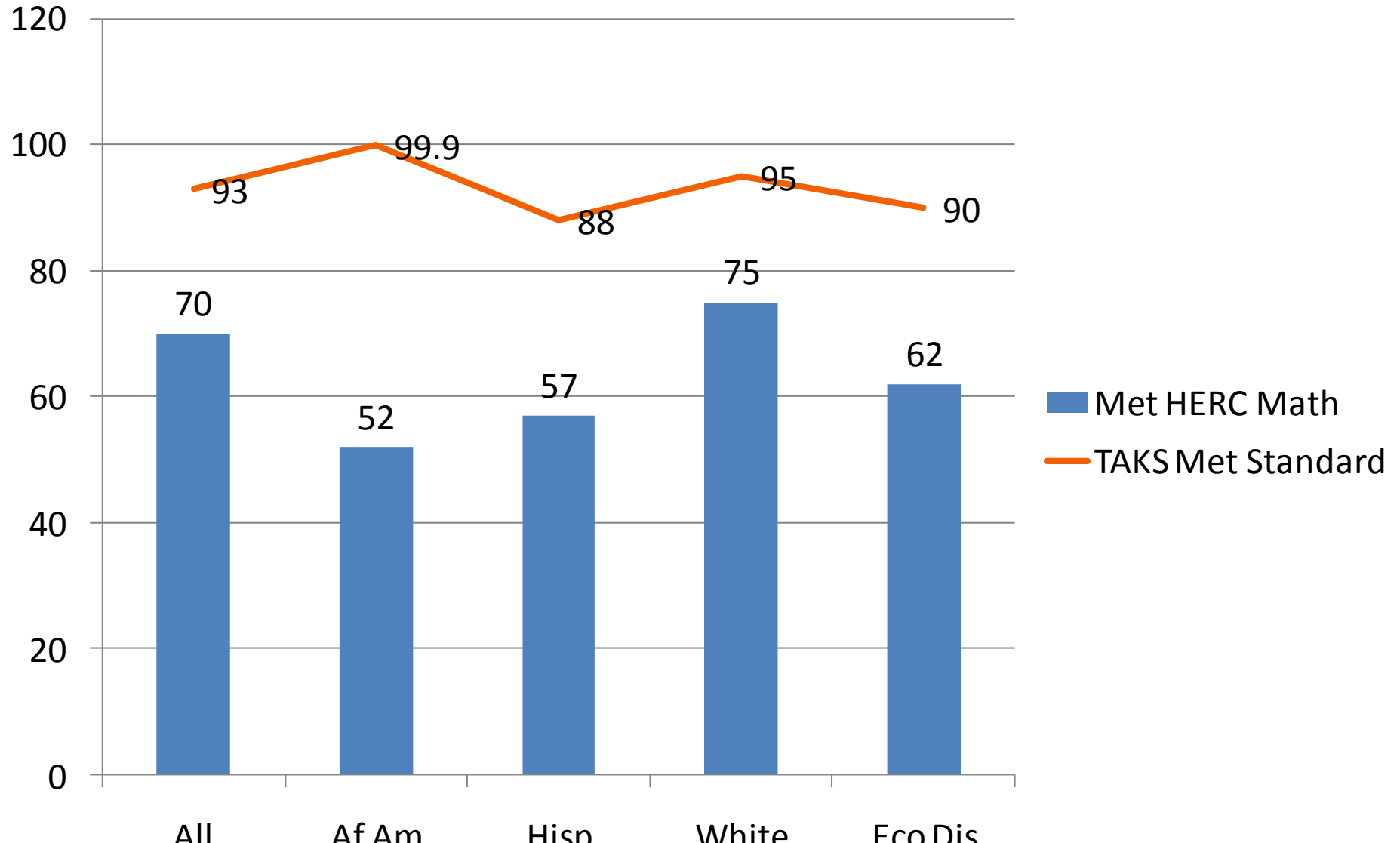


2010 11th Graders Meeting HERC vs. Passing TAKS

English Language Arts

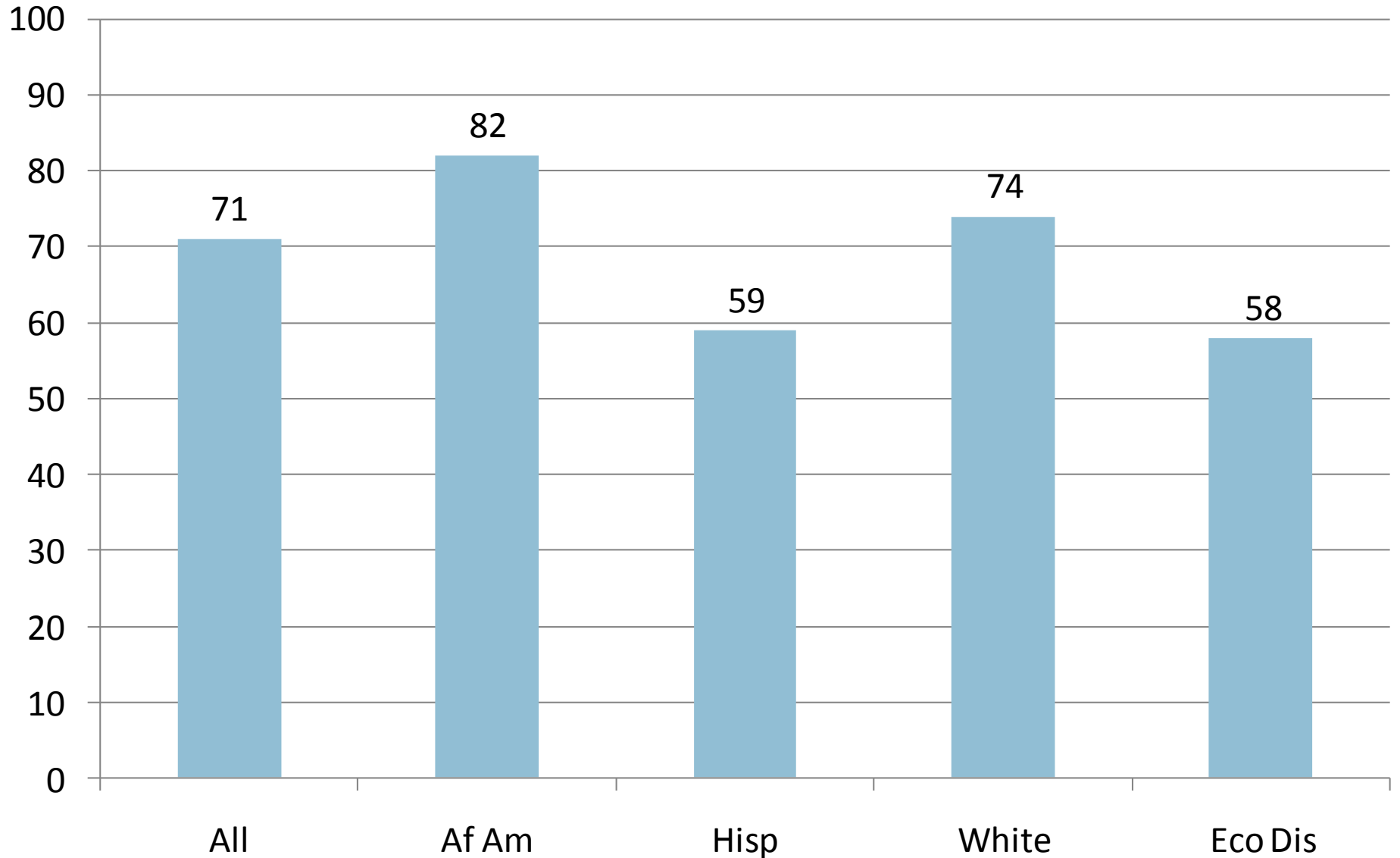


2010 11th Graders Meeting HERC vs. Passing TAKS Mathematics



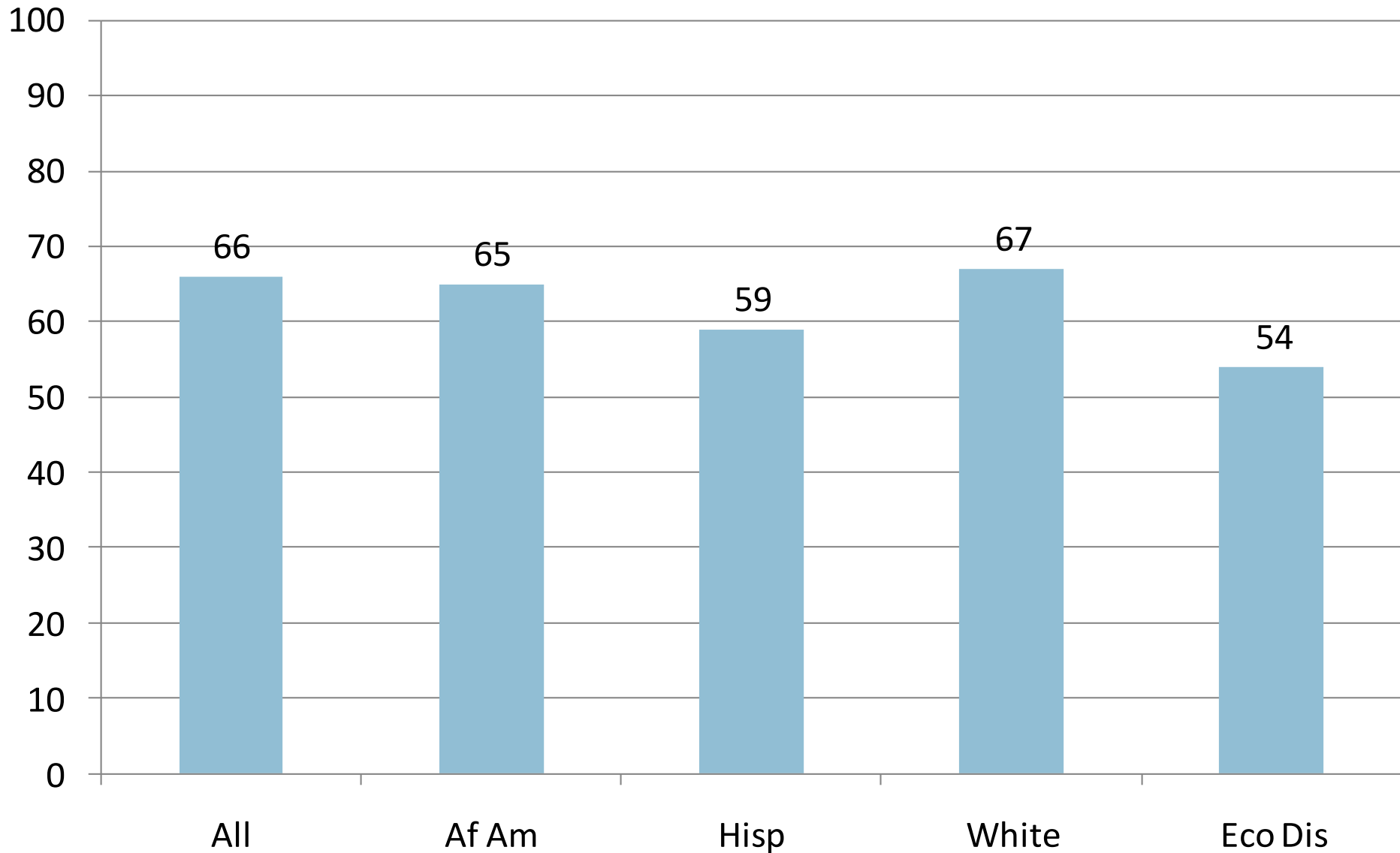
2010 College Ready Graduates

English Language Arts



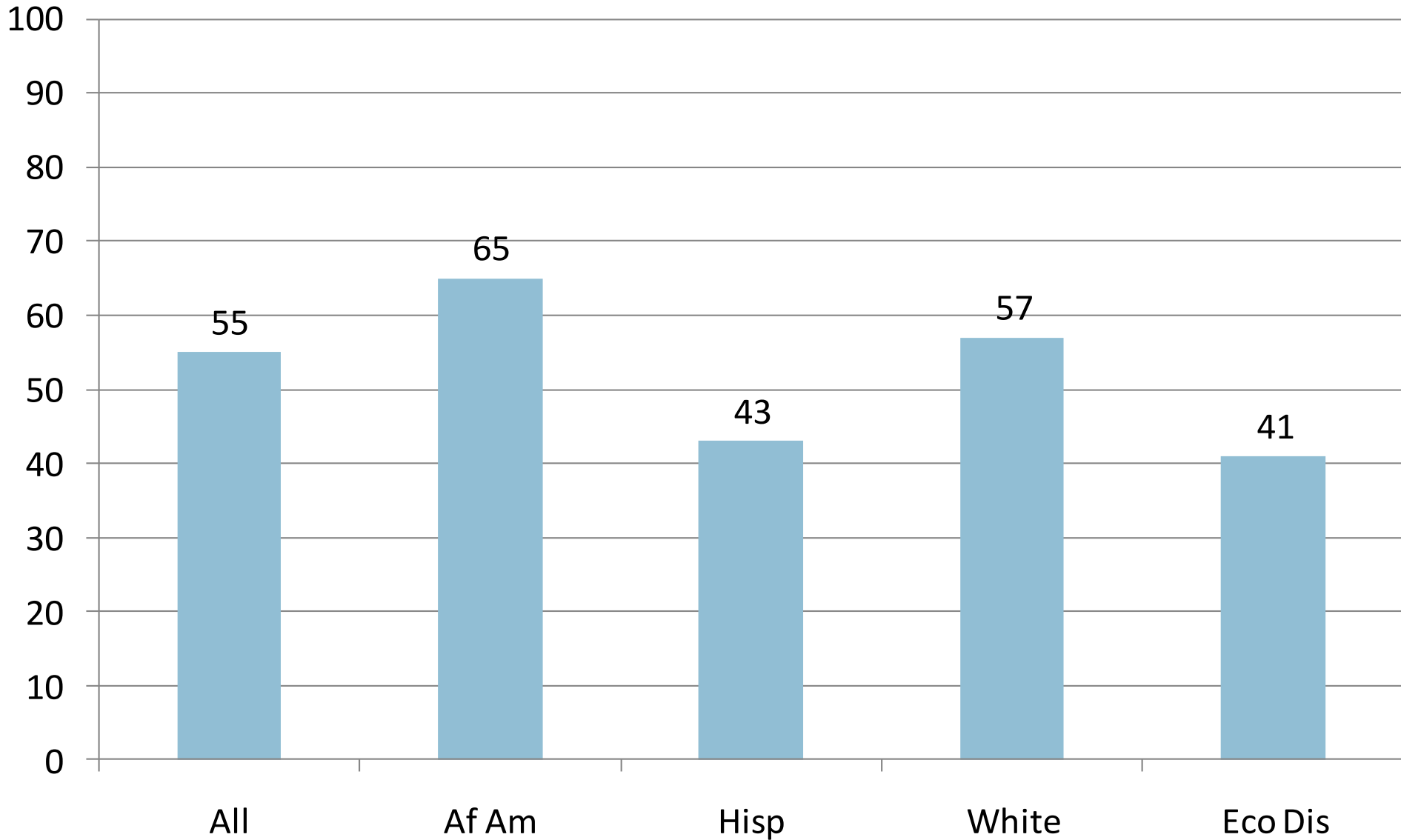
2010 College Ready Graduates

Mathematics



2010 College Ready Graduates

Both Subjects



Violent and Criminal Incidents

- Texas statute (TEC 39.053) requires every district to publish an annual report on violent and criminal incidents at campuses in the district
- The report must include:
 - *Number, rate and type of incidents*
 - *Information concerning school violence prevention and intervention policies and procedures used by the district*
 - *Findings that result from Safe and Drug-Free Schools and Communities Act*

Discipline Review for CISD 2008-09

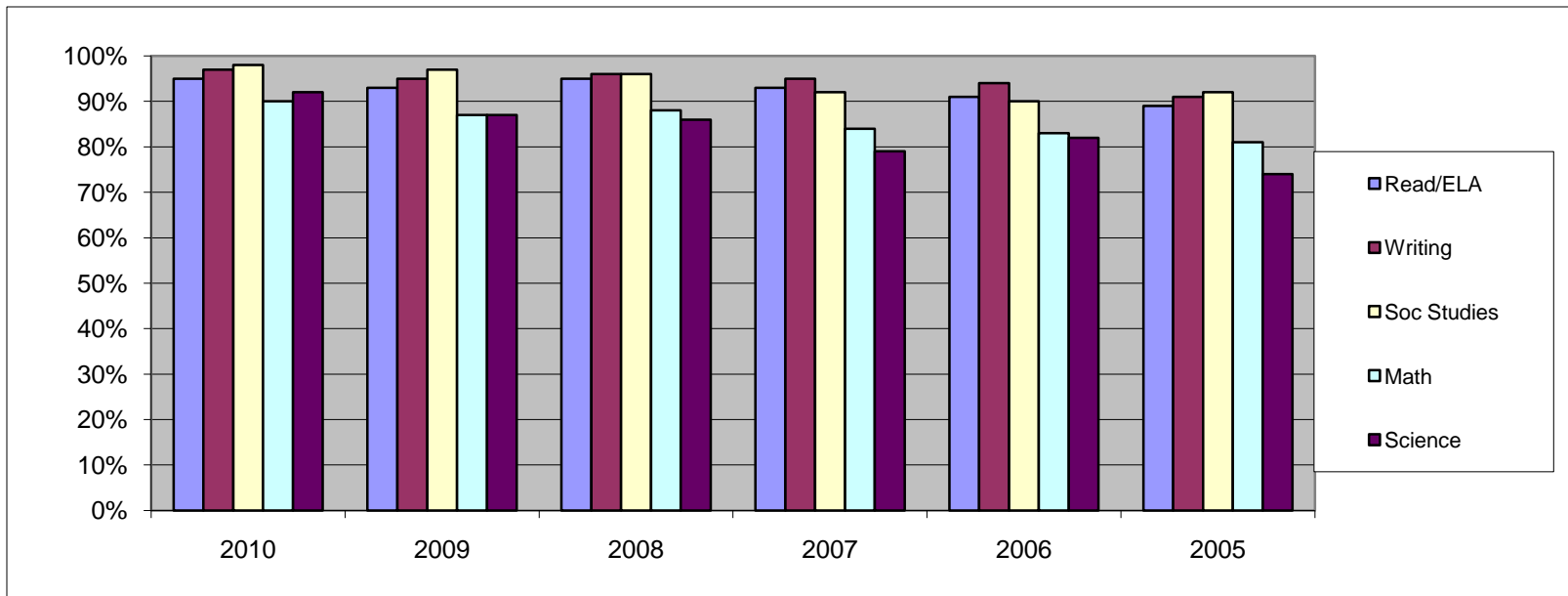
Conduct Punishable as a felony	15
Possess controlled substance	121
Possess alcoholic beverage	27
Abuse of volatile chemical	0
Public lewdness/ indecent expos	1
Retaliation against school employee	0
Conduct off campus/ in Title 5	6
Conduct off campus/ not in Title 5	0
Used/ possessed illegal knife	2
Used/ possessed prohibited weapon	0
Violation of Code while in AEP	4
Violation of Code of Conduct	5,486

Discipline Review for CISD 2008-09

Criminal Mischief	3
Terroristic Threat	8
Assault against employee/volunteer	3
Assault not employee/volunteer	23
Aggravated assault against employee/volunteer	0
Sexual assault not employee/volunteer	2
Cigarette to tobacco product	43
Felony Controlled Substance	3
False alarm/False report	1
Fighting/Mutual Combat	19
Used/possessed non-illegal knife	7

Longitudinal TAKS data “All Student” Group

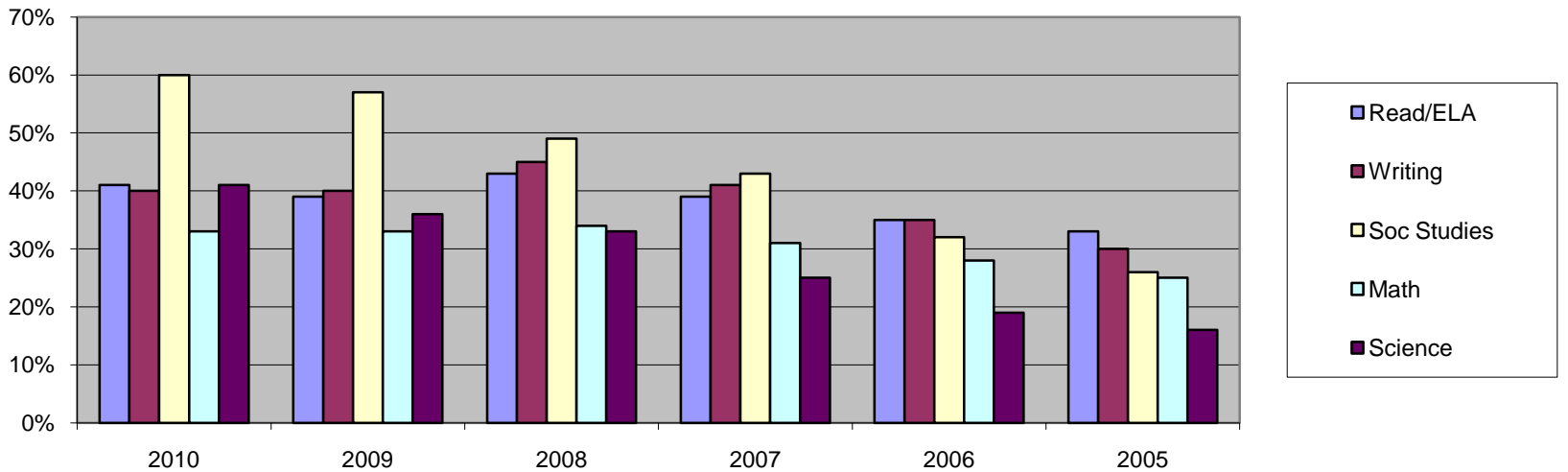
	2010	2009	2008	2007	2006	2005
Read/ELA	95%	93%	95%	93%	91%	89%
Writing	97%	95%	96%	95%	94%	91%
Soc Studies	98%	97%	96%	92%	90%	92%
Math	90%	87%	88%	84%	83%	81%
Science	92%	87%	86%	79%	82%	74%



Longitudinal TAKS data “All Student” group

Commended TAKS

	2010	2009	2008	2007	2006	2005
Read/ELA	41%	39%	43%	39%	35%	33%
Writing	40%	40%	45%	41%	35%	30%
Soc Studies	60%	57%	49%	43%	32%	26%
Math	33%	33%	34%	31%	28%	25%
Science	41%	36%	33%	25%	19%	16%



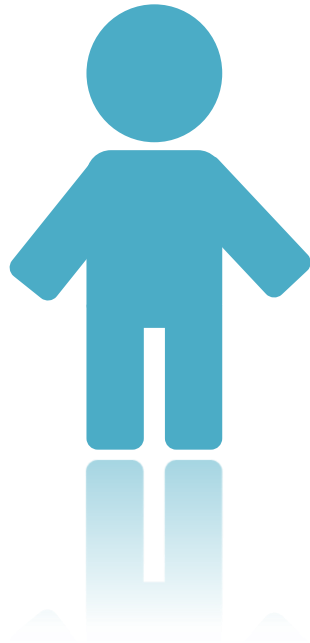
2010 Accountability Ratings

Campuses	
CISD	<i>Recognized</i>
ASES	Exemplary
BBES	Recognized
CES	Exemplary
FES	Recognized
GFES	Exemplary
HLES	Exemplary
JRES	Exemplary
MES	Exemplary
MHSPECHT	Exemplary
OCES	Exemplary
RBES	Exemplary
RCES	Exemplary
STZ	Recognized
TPES	Exemplary

2010 Accountability Ratings

Campuses	
CISD	<i>Recognized</i>
CMS	Recognized
CHMS	Recognized
MVMS	Recognized
SBMS	Exemplary
SVMS	Recognized
CHS	Recognized
CLHS	Recognized
SVHS	Recognized

Performance Based Monitoring Assessment System



Annual Report and Public Hearing
Comal ISD
January 25, 2011

Performance Based Monitoring Assessment System

The Performance-Based Monitoring (PBM) system, which was developed in 2003 in response to state and federal statute, is a comprehensive system designed to improve student performance and program effectiveness or if identification occurred because of inaccurate data, improve data collection and submission procedures

- Bilingual Ed/ESL
- Career and Technical Ed
- NCLB
- Special Education
- Leaver Data

Comal ISD PBMAS

<u>Program</u>	<u>Intervention</u>
Special Education	None required
Bilingual	None required
CTE	None required
NCLB	None required

Adequate Yearly Progress 2009-10



Annual Report and Public Hearing
Comal ISD
January 25, 2011

Measures Evaluated

- **Reading/ELA**

- Percent of students (Grades 3-8 and 10) who are **Proficient** in Reading/ELA
- Percent of students (Grades 3-8 and 10) who **Participate** in Reading/ELA

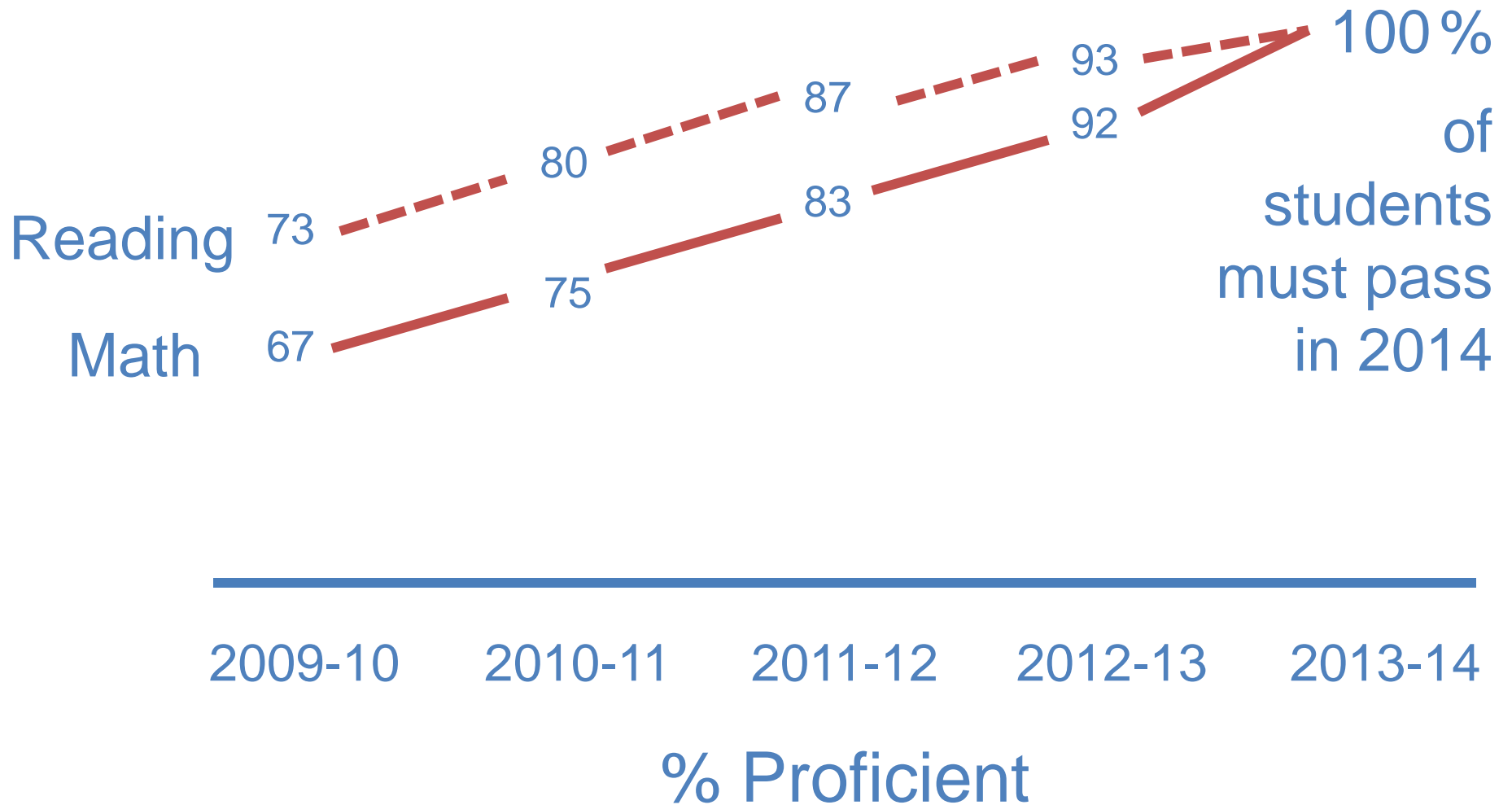
- **Math**

- Percent of students (Grades 3-8 and 10) who are **Proficient** in Math
- Percent of students (Grades 3-8 and 10) who **Participate** in Math

- **Other**

- Attendance Rate
 - For elementary and middle school campuses
 - Districts not offering 12th grade
- Graduation Rate
 - For high school campuses
 - Districts offering 12th grade

Standards for Performance



Student Groups Evaluated

Performance Accountability Subset	Participation All Students Enrolled	Other Indicator Attendance & Graduation
<ul style="list-style-type: none"> •All Students Group •African American* •Hispanic* •White* •Economically Disadvantaged* •Special Education* •Limited English Proficient* 	<ul style="list-style-type: none"> •All Students Group •African American* •Hispanic* •White* •Economically Disadvantaged* •Special Education* •Limited English Proficient* 	<ul style="list-style-type: none"> •All Students Group only

* Provided that these groups meet the Minimum Size Requirement.

< 50 = Not Evaluated | > 200 = Always Evaluated | 50-200 = Evaluated if equal to at least 10% of the All Student group

AYP Status Labels

- Met AYP
- Missed AYP – (Reason)

Reasons include:

- Math (Proficiency and/or Participation)
- Reading (Proficiency and/or Participation)
- Attendance Rate
- Graduation Rate

Accessing the AYP Report

The screenshot shows the Texas Education Agency website. The header includes the TEA logo and the text "TEXAS EDUCATION AGENCY". Below the header is a navigation bar with links: Home | District Locator | Index A-Z | Divisions | School Directory. A search bar is visible with the text "SEARCH TEA's Site". The main content area is titled "Adequate Yearly Progress (AYP)" and contains the following text:

Under the accountability provisions in the No Child Left Behind (NCLB) Act, all public school campuses, school districts, and the state are evaluated for Adequate Yearly Progress (AYP). Districts, campuses, and the state are required to meet AYP criteria on three measures: Reading/Language Arts, Mathematics, and either Graduation Rate (for high schools and districts) or Attendance Rate (for elementary and middle/junior high schools).

If a campus, district, or state that is receiving Title I, Part A funds fails to meet AYP for two consecutive years, that campus, district, or state is subject to certain requirements such as offering supplemental education services, offering school choice, and/or taking corrective actions.

**** 2010 Preliminary AYP Results are Now Available****

AYP Results for Previous Years

AYP Results for Previous Years
Year-specific information related to the AYP Status and SIP Identification for Texas school districts and campuses, including other statewide and regional results.

Frequently Asked Questions

Related Links
Division of NCLB Program Coordination
Student Assessment Division
Special Education in Texas
Division of Accountability Research

Chronology of AYP Federal Submissions, Communications, and Training Aids
See below

Contact the **Division of Performance Reporting** at (512) 463-9704 or email performance.reporting@tea.state.tx.us with any questions you may have.

1 [Texas Education Agency](http://www.tea.state.tx.us)

2 [CISD Website](#)

3 [CISD Schools - Front Office or Library](#)

2010 AYP Report Overview

Page One

Performance: Reading/ELA – 73% Proficient

- Reading Performance, 2009-2010
 - *Used to demonstrate proficiency.*
- Reading Performance, 2008-2009
 - *Used to calculate improvement (Safe Harbor).*
- Reading Performance, 2009-2010 with TPM
 - *Used as an alternative method of demonstrating proficiency.*

2010 AYP Report Overview

Page Two

Performance: Mathematics – 67% Proficient

- Math Performance, 2009-2010
 - *Used to demonstrate proficiency.*
- Math Performance, 2008-2009
 - *Used to calculate improvement (Safe Harbor).*
- Math Performance, 2009-2010 with TPM
 - *Used as an alternative method of demonstrating proficiency.*

2010 AYP Report Overview

Page Three

Participation: Reading/ELA & Mathematics – 95% Participation

- Reading/ELA & Math Participation, 2009-2010
 - *Used to demonstrate participation.*
- Reading/ELA & Math Participation, 2008-2009
 - *Used to calculate 2 year average, if needed.*

2010 AYP Report Overview

Page Four

Graduation Rate (75%) or Attendance Rate (90%)

- Graduation or Attendance Rate, 2009-2010
 - *Used to calculate whether or not the campus or district met the target rate.*
- Graduation or Attendance Rate, 2008-2009
 - *Used to demonstrate improvement.*
- 5 Year Longitudinal Graduation Rate, 2009-2010
 - *Class of 2008*

2010 AYP Report Overview

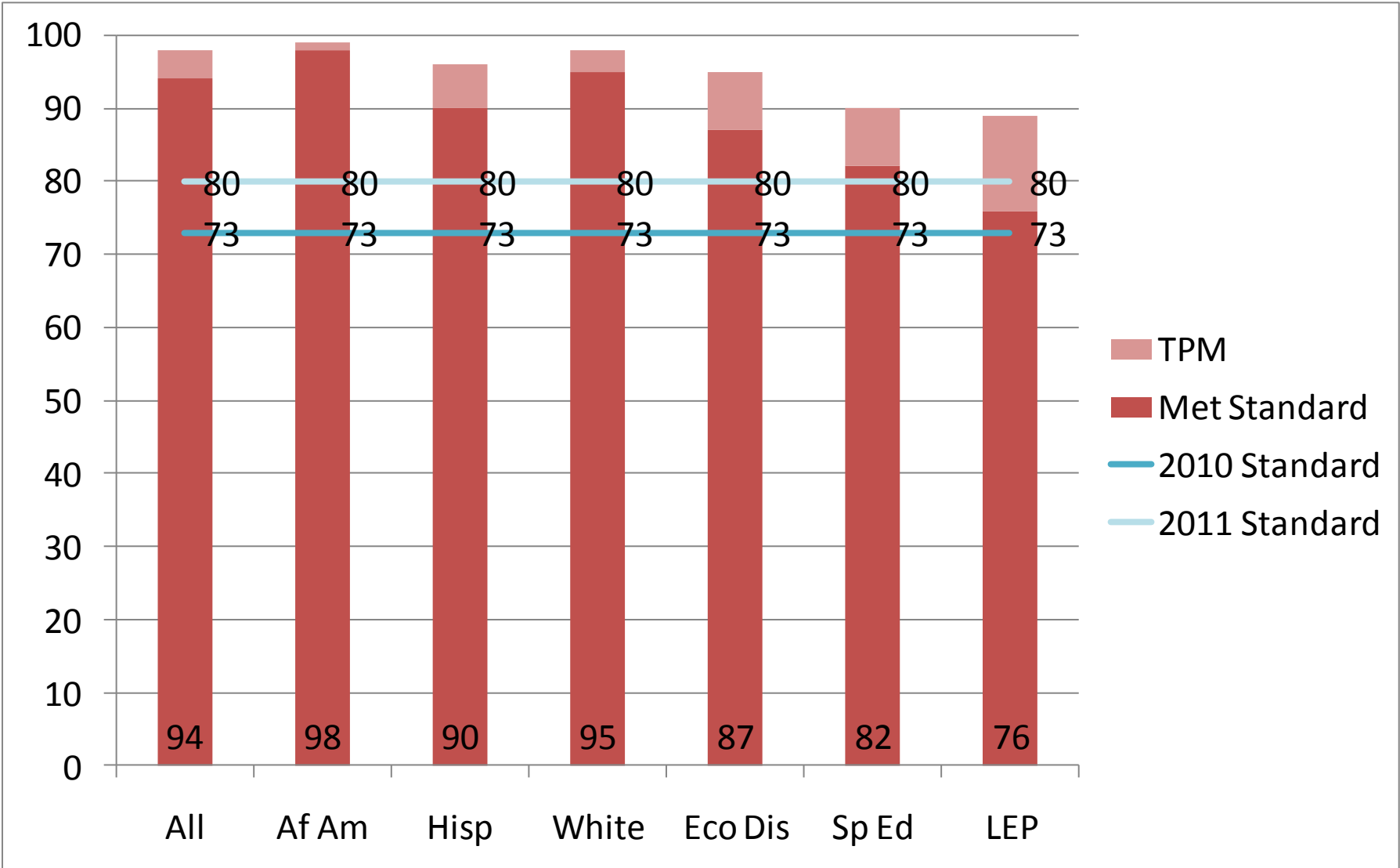
Page Five

AYP Explanation Table

- Summarizes the results of the AYP report

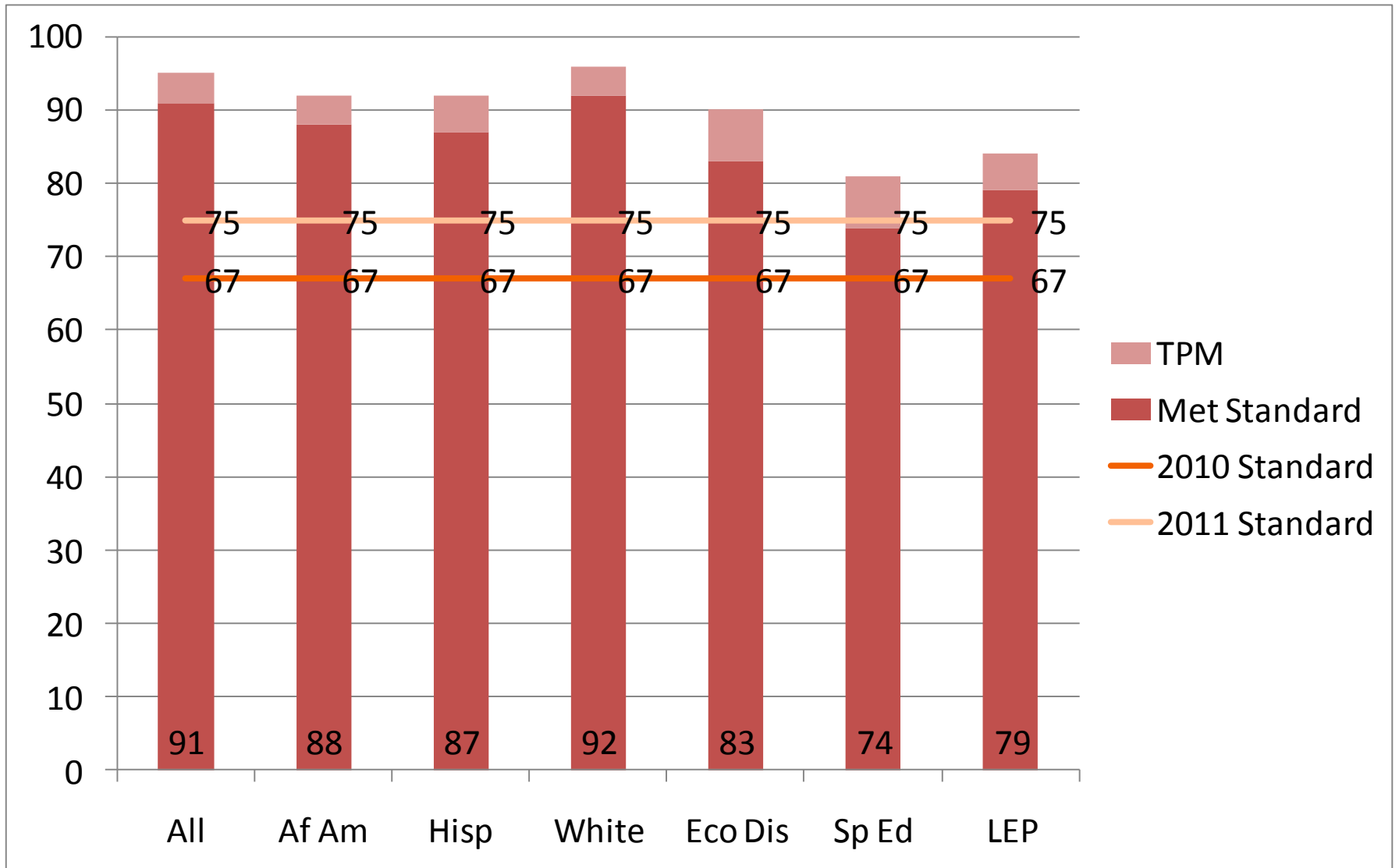
2010 AYP Performance

Reading/English Language Arts - (Grades 3-8 and 10)



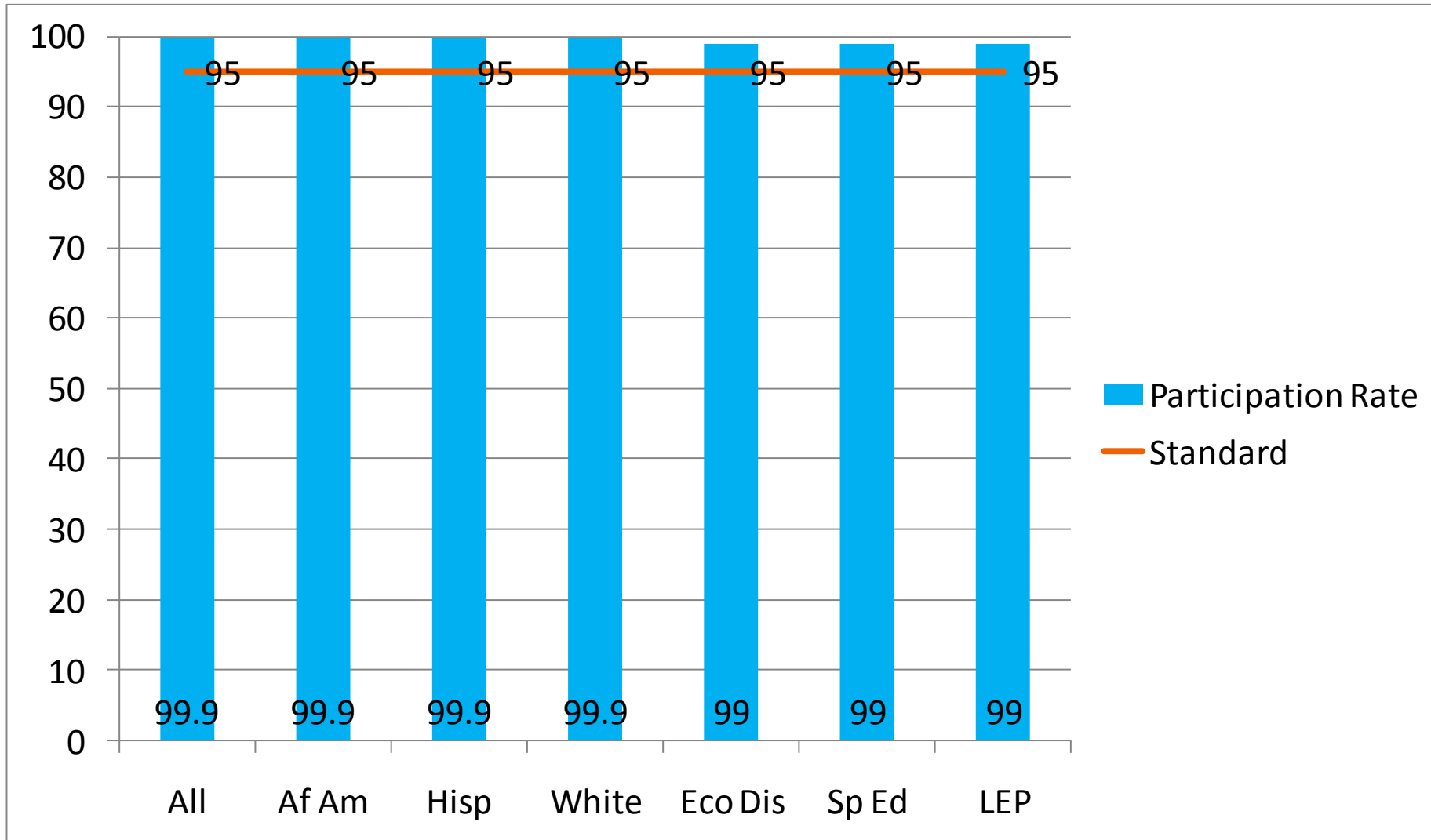
2010 AYP Performance

Mathematics- (Grades 3-8 and 10)



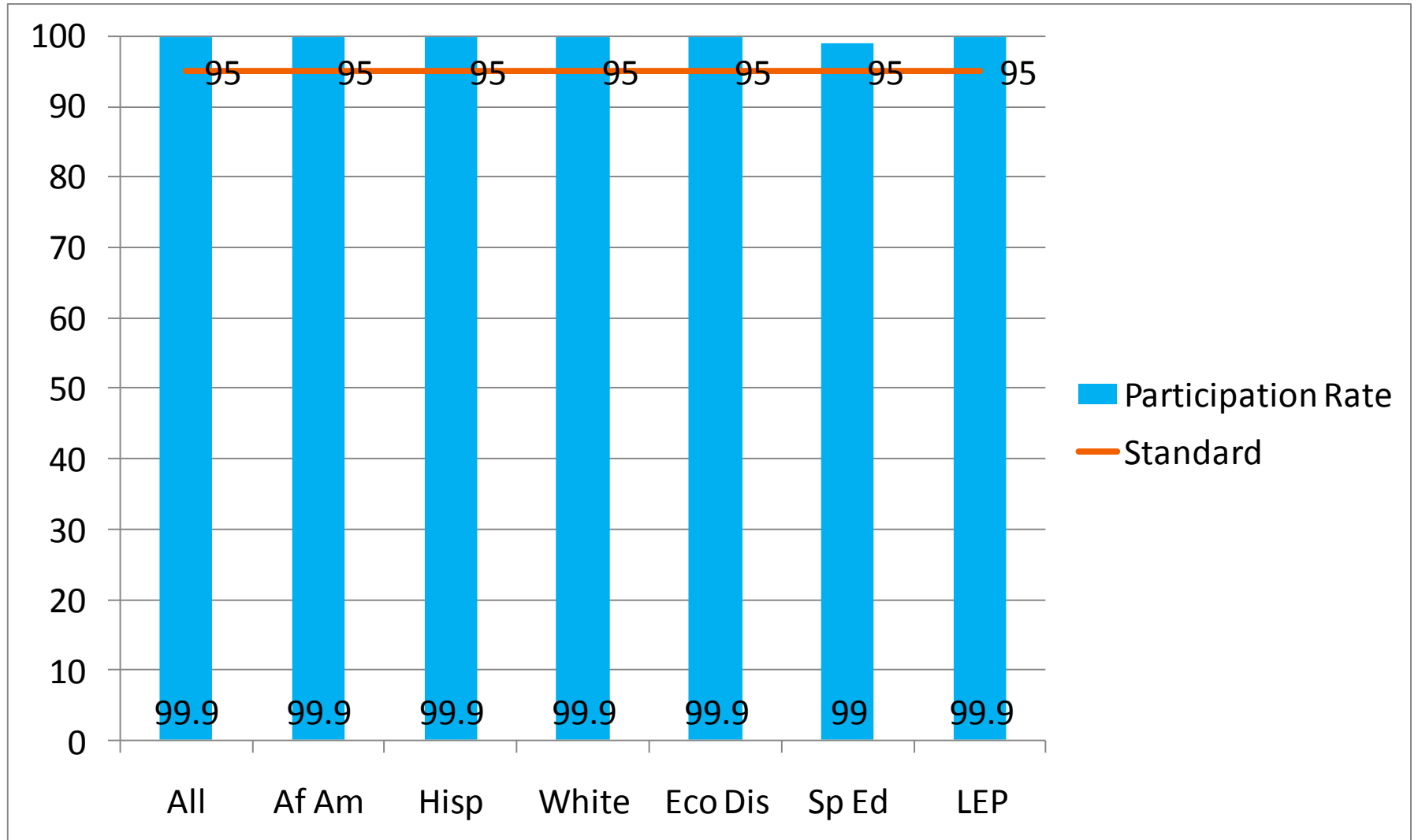
2010 AYP Participation

Reading/English Language Arts - (Grades 3-8 and 10)



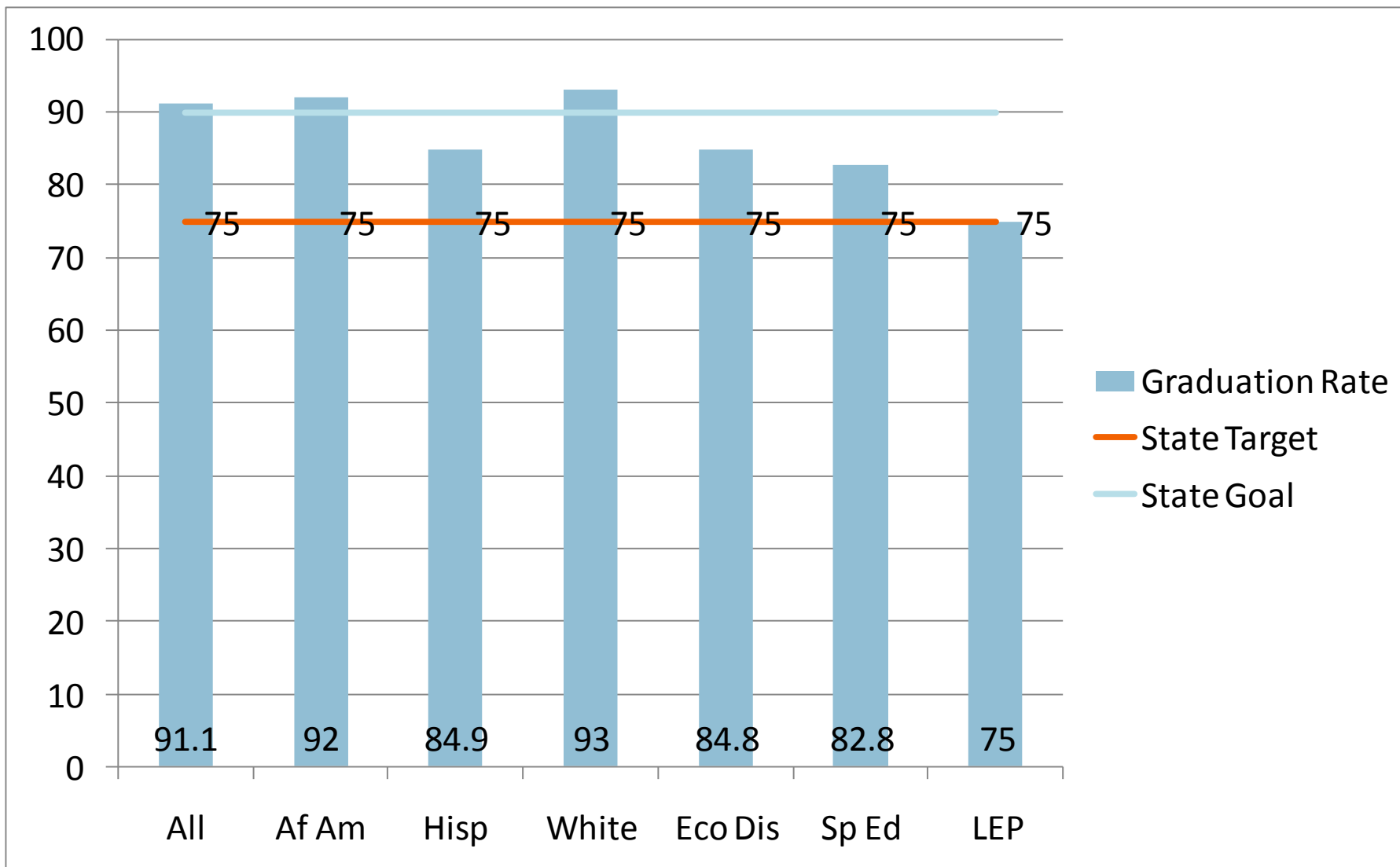
2010 AYP Participation

Mathematics- (Grades 3-8 and 10)



2010 AYP Graduation Rate

For High Schools and Districts with a 12th Grade



2010 AYP Status

Comal ISD

Comal ISD	2010 Status	Stage
<i>District Status</i>	<i>Met AYP (Reading) Met AYP (Math) Met AYP (Attendance and Graduation Rates)</i>	<i>None</i>
<i>All Campuses</i>	<i>Met AYP (Reading) Met AYP (Math) Met AYP (Attendance and Graduation Rates)</i>	<i>None</i>

Comal ISD 2009-10

- 2010 Academic Excellence Indicator System (AEIS)

 - Recognized***

 - One of only 77 school districts to obtain the rating using absolute standards. (Comal ISD obtain this rating without using Required Improvement, the Texas Projection Measure or exceptions.)

 - 58 Gold Performance Awards for outstanding academic performance in 2010.

- 2010 Federal Adequate Yearly Progress (AYP)

 - District and All Campuses meet AYP

- 2010 Performance Based Monitoring Assessment System (PBMAS) *No required action.*